

The Job Ahead

Washington

Four weeks ago — I was informed through the Pacific Citizen that 13 chapters of the Pacific Southwest District Council had voted to impeach me.

Three weeks ago — I was informed that the resolution was an effort to coerce me into seeking the resignation of our National Executive Director.

Two weeks ago — the District Council withdrew the resolution.

Rather than expressing my views about the factors motivating the events of the past three or four weeks, which — I must admit — I am still trying to comprehend and interpret fully, I believe it would be more beneficial for me to comment about my future contemplated actions:

1—First, I will continue to give guidance and support to our National Executive Director, and will not be coerced into seeking his resignation.

2—Second, I will continue to work for the implementation and improvement of the following programs and activities to accomplish — or as a means of accomplishing — programmatic objectives adopted by the National Council at the 1974 National Biennial Convention:

—Establishment of a legal defense and education instrumentally supported by JACL or as an arm of JACL;

—Development of a political education program which will better enable Japanese Americans to participate in the political processes of the land;

—Further development and expansion of the Youth Program with particular concern for assuring the success of JAY initiated projects;

—Strengthening the anti-defamation program;

—Improvement of the public relations capabilities of JACL;

—Completion and further development of reference, resource and teaching materials.

Mr. Sugiyama's address: 8319 Cushing Court, Springfield, Va. 22153

NATIONAL DIALOGUE: David Ushio

National Advocacy

PART THREE

San Francisco

What kind of organization is JACL? Is it a faraway national voice speaking out for me and my rights in marble corridors? Or is it an organization where I can meet people who share my heritage and concerns and work with them in my community? If national advocacy is so important, where does the local chapter fit in?

Since it began in 1930, JACL has voiced the needs and hopes of Japanese Americans. It has also provided a sense of community. It continues to do both.

Many of our volunteer members who pay in their \$12 or \$15 dues expect a tangible return in terms of services, programs, special functions, etc. Traditionally, JACL has been a very service oriented organization. A person who pays his dues has had access to a credit union, a group

health insurance plan, access to charter flights to Japan, low cost tours, scholarship programs for his kids. Every one realizes that not all kids are going to get scholarships, but at least there is a tangible goal to shoot for. These are things we can hold in our hand and see as a direct benefit to us.

Gaining national goodwill, laying ground work for possible future benefit, working to prevent defamatory remarks: these are intangible. We cannot immediately tell if these actions have had effect. There's nothing we can hold in our hands and say this is a benefit to us.

This is the main difference between activity on the local chapter level and on the national level. It is the difference between tangible rewards and intangible or long-range rewards.

From JACL Nat'l Headquarters

Communication

Scholarship deadline here: April 1

San Francisco

Application deadline for the 1975 National JACL freshman and graduate scholarships is here: April 1—extended previously from March 1.

Scholarships are open to all persons of Japanese ancestry, members of the JAYs or children of JACL members. Nine freshmen scholarships are for those graduating this year from high school, planning to enter college, trade and business school in the fall. Two graduate scholarships are reserved for college graduates or current graduate students at an accredited graduate school.

Awards are expected to average around \$500 this year.

Application forms are available at JACL Headquarters. Completed forms must be accompanied by transcripts, a confidential financial statement from parents and three letters of recommendation. Academic achievement, financial need and extracurricular activities figure in the final judging. It was pointed out by Mrs. Grayce Uyehara of Philadelphia, national scholarship chairperson.

Applicants need not apply through a chapter. In the past, chapters nominated a single candidate for the scholarships. The rules were changed, making it a national "open".

Whaling position paper pays off

San Francisco

During January, the JACL position paper on the whaling issue was sent to chapters, conservation groups and public officials.

Dr. Clifford Uyeda, whaling issue chairman, earlier this month said several favorable replies have been received from Senators Daniel Inouye, Hiram Fong and Warren Magnuson, Reps. Patky Mink and Spark Matsunaga.

Matsunaga found the paper "very informative and very fair, balancing the desire to protect whales against the very real effect such tactics as the boycott has on Japanese Americans."

State Sen. George Moscone was "adduced to hear of what can only be regarded as racist elements" entering the various efforts to save the whales.

Project JONAH president Joan McIntyre found the JACL position paper "very comprehensive and very good... and by continuing to stay in touch and working cooperatively, we can save the whales without penalizing any people for their tradition and history."

Similar expressions of being aware of the racist backlash in the Save the Whale campaigns were found in acknowledgments from Thomas L. Kimball, exec. v.p., National Wildlife Federation; Kent Gil, pres., Sierra Club; and Joanna G. Clark, Friends of the Earth, London — all respected and influential conservation groups.

Dr. Uyeda pointed out that groups calling for saving whales demand blanket boycott of offending nations — Japan and the Soviet Union. The same groups which should likewise save the porpoises, however, only target for boycott the offending companies — the light meat tuna packers, which happen to be in the U.S.

Membership leaflet reprinted

San Francisco

The rich, colorful green JACL membership leaflet for prospective and new members has been reprinted with the traditional JACL insignia, replacing an earlier edition that featured the unauthorized but modern-looking logo.

National Headquarters on March 12 informed the chapters that the new leaflet is available on a first come, first serve basis. Other membership supplies are available, such as:

— A renewal brochure ("Some Bad News & Some Good News");

— 2—Membership cards;

— 3—Membership application forms.

Major Bldg. Fund donors queried

Donors of \$1,000 and more will be acknowledged in a special manner in the new JACL Headquarters Building, according to architect Nobu Nakamura, of Van Bourg, Nakamura, Katsura, and Kerner, Inc., who was commissioned to design and construct the building in San Francisco's Nihonmachi.

"The display of these names represented architectural, artistic and practical problems," Nakamura said. A design plan, satisfying the considerations of dignity and practicality of the JACL Building Committee and artistic sensibilities of the architect and designer, will have a broad wall in the Headquarters' main hall display a photographic blow-up of a bamboo grove in subtle greys and whites. The names of donors

of \$1,000 and more will be superimposed in a darker color.

"We're quite pleased with the final decision of the Committee," said Nakamura. "Now the concern is the time frame in which we have to set the final design."

All names to be so inscribed should reach National Headquarters before May 1 to allow sufficient time for the designer. All \$1,000-plus donors are being notified by Steve Doi, National Campaign co-chairperson, to send in the desired spelling.

"By no means is the campaign yet closed to contributors," said Doi. "Continuously rising prices have great effect on our construction costs. The Building Fund Campaign is still accepting pledges."

Further information on any of the current JACL programs may be secured by writing or calling National Headquarters, 22 Peace Plaza Suite 203, San Francisco 94115, (415) 865-3203; or the local JACL chapter.

on the history and cultural heritage of the Japanese Americans, and the establishment of a reference and resource library on the Japanese in America;

—Development of improved and innovative approaches to providing or for securing aid and assistance for the elderly Issei and Nisei;

—Full implementation and strengthening of the Development Program as a primary means of producing the resources needed to carry out these programs.

3—I will continue to serve the JACL in whatever other way I can.

If, however, the majority of the chapters informs me that I am failing to perform my duties, I will step aside and allow those who are critical of me an opportunity to direct the actions of the JACL.

Warren panicked on Evacuation, says Esquire story

NEW YORK—The late Chief Justice Earl Warren has been quoted as having said that former president Nixon was a "cheat, a liar and a crook" who abused the American people.

Writing in the current issue of Esquire Magazine, Alden Whitman on Mar. 18 said that Warren referred to his successor Warren Burger as a "horse's ass."

Whitman said that in his talks with Warren the onetime chief justice had the faculty of appraising himself with extraordinary candor.

Warren admitted, Whitman said, that he had acted "wrongfully and in panic in uprooting Japanese Americans in California" as then attorney general of that state; and that he used to give the Constitution "short shrift" as a district attorney.

In his statements on Nixon, Warren was quoted as saying: "Tricky is perhaps the most despicable president this nation has ever had. He was a cheat, liar and a crook, and he brought my country, which I love, into disrepute. Even worse than abusing his office, he abused the American people."

Mountain Plains to meet in Omaha

OMAHA, Neb. — The Mountain Plains JACL District Council will meet April 4-5 at the Ramada Inn Central to discuss programs for the coming biennium and elect district officers, it was announced by Ed Ishii, host chapter president. Mits Kawamoto and Bob Nakadai are co-chairing the conference.

MPDC Gov. Takashi Mayeda of Denver said Shig Sugiyama, national president, and David Ushio, national executive director, have been invited to be speakers.

Delegates from the five chapters — four from Colorado — are expected to be present.

Eden JAYs shape NC-WN workshop

SAN LORENZO, Calif. — Eden Township JAYs are in a hurry putting on the final touches for the once-postponed NC-WNDYC quarterly conference, now set for the April 12-13 weekend here at the Eden Japanese Community Center.

With the theme of "Crossroads Reconstructed", coordinator Donna Fone revealed interracial marriages will be a workshop theme for Saturday afternoon. DYC delegates will have their business session in the mornings. Saturday night will include dinner, program, a JAY activity and late night rap session.

Registration package fees are based upon when forms are submitted by March 31—\$12 by April 5—\$15; by April 11—\$17. Registration forms are available from: Donna Fone, 2620 East Ave., Hayward 94541 (415) 537-6427.

SHIG YAMAKI: Mid-Columbia JACLer

Named 'Orchardist of the Year'

HOOD RIVER, Ore. — Hood River County people gathered Feb. 4 at the Hood River Valley high school to honor its outstanding citizens.

Shig Yamaki, who grew up in the Oak Grove area pre-war and now a successful Pine Grove fruit grower, was named "Orchardist of the Year" for 1974. A businessman was named citizen of the year, a sixth grade teacher at Park-

dale was cited as teacher of the year and the service awards were presented to three persons.

Over 200 persons attended. Among those making presentations were awarders from last year, Mrs. Shizue Iwatsuki, an Issei woman who was invited to read her prize-winning poem before the Emperor of Japan, was the Woman of Accomplishment in 1973.

Yamaki was relocated during WW2 to Tule Lake, joined the Army in 1945 and went to trade school in Chicago where he met and married his wife. He now farms 26 acres, regarded as an excellent orchard manager and has served on various local school, JACL and church committees.

He has been a Pine Grove fireman for 25 years, most of them as chief engineer.

—Clipping from Mam Noji.

Whingding at Tokyo

CHICAGO — Arrangements are being completed for a gala 1900 Club International whingding at the Keio Plaza Hotel in Tokyo for Friday, Oct. 24. It was announced by Dr. Frank F. Sakamoto, chairman.

These are vital functions that chapters provide. The chapters, noting the local problems, in turn provide the documentation of specific cases which we can use as National JACL goes to agencies like the National Institute on Mental Health or the Administration on Aging to say that we have problems and these are ways in which they can be served.

Housing for elderly

About three years ago in Spokane, Washington, the chapter realized there were critical housing needs of elderly Issei that were not being met. They almost single-handedly, with some assistance from the national organization, went after housing money to build a 42 unit senior citizen housing project. This was not exclusively Japanese American though about 20 Japanese American families now live there. Residents must be elderly and low income. The local chapter contacted its Congressmen.

The work of the Spokane Chapter seemed to say for other communities that housing is a critical problem for our elderly. There are unique problems which are not being adequately met. Through the work of one local chapter a pattern is developed and communicated nationally through JACL. Other communities are helped.

Continued on Next Page

PACIFIC CITIZEN

Membership Publication: Japanese American Citizens League, 725 Weller St., Los Angeles, Calif. 90012; (213) MA 6-6926
Published Weekly Except First and Last Weeks of the Year Second Class Postage Paid at Los Angeles, Calif.

VOL. 80 NO. 12

FRIDAY, MARCH 28, 1975

Subscription Rate Per Year U.S. \$7. Foreign \$10.00

15 CENTS

PACIFIC SOUTHWEST DISTRICT COUNCIL

No more impeachment worries...

By HARRY HONDA

LOS ANGELES — When the framework of the present National JACL constitution and by-laws was embodied at the 1948 national convention, a desolate section on impeachment of national officers because of malfeasance, misfeasance or nonfeasance was considered and approved for the first time.

Recollection of those who attended that convention is that particular section was added to cover the eventualities an officer who might be convicted in court could be removed for the good of the organization.

Article IX (National Board), section 3, of the JACL Constitution provides elective officers can be removed or impeached, provided the National Board after an investigation presents the issue to the National Council (comprised of delegates from the chapters in good standing) and three-fourths of them adjudge the officer on trial guilty of the charges preferred against him.

Hence, there was considerable speculation at the special March 9 meeting of the Pacific Southwest District Council here on how to initiate proceedings.

PSW Gov. Masamune Kojima, who would be the logical person to introduce the motion, openly wondered whether there would be a second.

"Your mandate is that this district is requesting its governor, as a member of the National Board, to move for the investigation, etc., and I will make such a motion," Kojima said, "but, of course, there will have to be a second... If there is no second, it will die." It was his opinion that another district governor would likewise need a mandate of his particular district council in order to move or second, because of the gravity of the action.

Even though Mrs. Helen Kawagoe, a member of the PSWDC, the district could not order her to second the motion, Kojima added, since she is a nationally-elected officer, vice president for public affairs.

National president Shig Sugiyama interjected here he was not able to guarantee the National Board to do anything procedurally.

PSW legal counsel Louis Ito explained the JACL Constitution does not spell out the procedures for impeachment of national officers, noting also JACL has no precedent. But it was his feeling that when the board meets to vote, "an interested member of the board must abstain from the proceedings... and let others who are disinterested conduct the proceedings."

Since Sugiyama would be the subject under review, he would have to relinquish the presiding role to the president-elect, Ito advised.

Jim Murakami, national president-elect, pointed out it was the National Council which had ratified the appointment of the National Executive Director and it retains the power of removal. David Ushio's appointment was adopted at the 1972 national convention by a 56 1/2-26 1/2 vote.

The National JACL Board is scheduled to meet next Oct. 10-12 at the new JACL Bldg. in San Francisco. One had been planned for mid-summer but due to high cost of convening the board — over \$6,000 — the Executive Committee last month moved to postpone the board meeting into the next fiscal year, which starts Oct. 1.

8—Civil Rights hearing. "That was before Sugiyama came in as president (and he should not be held accountable)." At this point, Nadine Hata appealed. "He was president-elect... Kojima countered that he couldn't be impeached as president-elect since "he's already passed that stage."

PSW's Motion

Orange County JACL president Mike Ishikawa repeated Ito's interpretation that the district could not impeach national officers and called for the National Board to investigate the charges or bill of particulars. "It is not for this council to determine whether anyone is guilty or not," Ishikawa reflected.

"Our job is not to determine whether or not there were any violations," Ishikawa continued. "It's the National Board's responsibility and we are recommending it does its job."

Kojima contended that the district's resolution should be persuasive enough for the National Board to discern whether to call an open hearing or not.

The vote was 13-9 for the Mar. 9 PSW resolution to investigate the charges and concerns made against the National President and the National Director as recorded in minutes. Ishikawa moved, seconded by Amy Ishii for Hollywood.

Previously Ed Tokeshi of San Gabriel Valley moved to "impeach the President and remove the National Executive Director" but it was withdrawn after a compelling plea from former national president George Inagaki of Venice-Culver not to antagonize the entire national organization. "Impeach" has a harsh ring "when you consider he is only a volunteer and not a paid officer," Inagaki said.

Commiserating with Sugiyama, Inagaki felt he had done a lot of things when he was on the National Board that "before a body like this today, I wouldn't have stood a chance."

Continued on Next Page

JACL Subscribers

FEBRUARY, 1975 (No. 2)

The Pacific Citizen acknowledged 4,309 subscriptions from 61 chapters during the month of February as follows:

Arizona — 112 Parker — 55
Chicago — 40 Pasadena — 39
Cincinnati — 62 Philadelphia — 20
Cleveland — 35 Placer City — 121
Cleveland — 22 Portland — 36
Cleveland — 144 Redwood — 44
Con Costa — 14
Cortez — 76 Sacramento — 129
Dayton — 47 St. Louis — 91
Detroit — 25 Salinas — 12
Detroit — 4 San Benito — 1
Downtown — 9 St. Bernardino — 132
East La. — 22 St. Gabriel — 145
Edin. Wash. 110 St. Jose — 157
Ft. Worth — 41 St. Louis Obis — 20
Fremont — 22 St. Mateo — 151
Gardens — 30 St. Mary — 13
Glenview — 37 St. Maria — 13
Hollywood — 19 Seabrook — 35
Imperial — 9 Seattle — 148
Los Angeles — 129 Selma — 38
Long Beach — 63 Sequoia — 30
Metro L.A. — 96 Spokane — 25
Mid-Coll. — 96 Twin Cities — 25
Mil-Hi — 40 Ventura — 15
St. Paul — 30 Wash. — 13
St. Paul — 30 Wash. DC — 19
St. Paul — 30 West L.A. — 161
Omaha — 18 West Valley — 35
Orange City — 15 Wichita — 47

Pacific Southwest District Council

PSW Gov. Masamune Kojima

Jim Murakami, national president-elect, pointed out it was the National Council which had ratified the appointment of the National Executive Director and it retains the power of removal.

David Ushio's appointment was adopted at the 1972 national convention by a 56 1/2-26 1/2 vote.

The National JACL Board is scheduled to meet next Oct. 10-12 at the new JACL Bldg. in San Francisco. One had been planned for mid-summer but due to high cost of convening the board — over \$6,000 — the Executive Committee last month moved to postpone the board meeting into the next fiscal year, which starts Oct. 1.

8—Civil Rights hearing.

"That was before Sugiyama came in as president (and he should not be held accountable)." At this point, Nadine Hata appealed. "He was president-elect... Kojima countered that he couldn't be impeached as president-elect since "he's already passed that stage."

PSW's Motion

Orange County JACL president Mike Ishikawa repeated Ito's interpretation that the district could not impeach national officers and called for the National Board to investigate the charges or bill of particulars. "It is not for this council to determine whether anyone is guilty or not," Ishikawa reflected.

"Our job is not to determine whether or not there were any violations," Ishikawa continued. "It's the National Board's responsibility and we are recommending it does its job."

Kojima contended that the district's resolution should be persuasive enough for the National Board to discern whether to call an open hearing or not.

The vote was 13-9 for the Mar. 9 PSW resolution to investigate the charges and concerns made against the National President and the National Director as recorded in minutes. Ishikawa moved, seconded by Amy Ishii for Hollywood.

Previously Ed Tokeshi of San Gabriel Valley moved to "impeach the President and remove the National Executive Director" but it was withdrawn after a compelling plea from former national president George Inagaki of Venice-Culver not to antagonize the entire national organization. "Impeach" has a harsh ring "when you consider he is only a volunteer and not a paid officer," Inagaki said.

Commiserating with Sugiyama, Inagaki felt he had done a lot of things when he was on the National Board that "before a body like this today, I wouldn't have stood a chance."

Continued on Next Page

JACL Subscribers

FEBRUARY, 1975 (No. 2)

The Pacific Citizen acknowledged 4,309 subscriptions from 61 chapters during the month of February as follows:

Arizona — 112 Parker — 55
Chicago — 40 Pasadena — 39
Cincinnati — 62 Philadelphia — 20
Cleveland — 35 Placer City — 121
Cleveland — 22 Portland — 36
Cleveland — 144 Redwood — 44
Con Costa — 14
Cortez — 76 Sacramento — 129
Dayton — 47 St. Louis — 91
Detroit — 25 Salinas — 12
Detroit — 4 San Benito — 1
Downtown — 9 St. Bernardino — 132
East La. — 22 St. Gabriel — 145
Edin. Wash. 110 St. Jose — 157
Ft. Worth — 41 St. Louis Obis — 20
Fremont — 22 St. Mateo — 151
Gardens — 30 St. Mary — 13
Glenview — 37 St. Maria — 13
Hollywood — 19 Seabrook — 35
Imperial — 9 Seattle — 148
Los Angeles — 129 Selma — 38
Long Beach — 63 Sequoia — 30
Metro L.A. — 96 Spokane — 25
Mid-Coll. — 96 Twin Cities — 25
Mil-Hi — 40 Ventura — 15
St. Paul — 30 Wash. — 13
St. Paul — 30 Wash. DC — 19
St. Paul — 30 West L.A. — 161
Omaha — 18 West Valley — 35
Orange City — 15 Wichita — 47

San Jose Japanese plan for Bicentennial

SAN JOSE, Calif. — Japanese cultural events will be a part of the 17-month U.S. Bicentennial celebration being observed here with the Japanese community's activities scheduled for the last weekend of March and first weekend of April, 1977.

The Bicentennial celebration here will climax Nov. 29, 1977, according to Richard Tanaka, executive committee chairman for the Japanese group, which has adopted "Kiaen" (Celebration) as the theme. Rep. Norman Mineta (D-Calif.) is honorary chairman.

The reunion, which will be held July 26-31, is the first time the event is being staged east of the Rockies. Heretofore, they have been held either on the West Coast or in Hawaii.

Tying in with the U.S. Bicentennial, the reunion here will also relate the contributions made by Japanese Americans.

San Jose Japanese plan for Bicentennial

SAN JOSE, Calif. — Japanese cultural events will be a part of the 17-month U.S. Bicentennial celebration being observed here with the Japanese community's activities scheduled for the last weekend of March and first weekend of April, 1977.

The Bicentennial celebration here will climax Nov. 29, 1977, according to Richard Tanaka, executive committee chairman for the Japanese group, which has adopted "Kiaen" (Celebration) as the theme. Rep. Norman Mineta (D-Calif.) is honorary chairman.

The reunion, which will be held July 26-31, is the first time the event is being staged east of the Rockies. Heretofore, they have been held either on the West Coast or in Hawaii.

Tying in with the U.S. Bicentennial, the reunion here will also relate the contributions made by Japanese Americans.

The reunion, which will be held July 26-31, is the first time the event is being staged east of the Rockies. Heretofore, they have been held either on the West Coast or in Hawaii.

Tying in with the U.S. Bicentennial, the reunion here will also relate the contributions made by Japanese Americans.

The reunion, which will be held July 26-31, is the first time the event is being staged east of the Rockies. Heretofore, they have been held either on the West Coast or in Hawaii.

Continued on Next Page

PSW legal counsel Louis Ito

Jim Murakami, national president-elect, pointed out it was the National Council which had ratified the appointment of the National Executive Director and it retains the power of removal.

David Ushio's appointment was adopted at the 1972 national convention by a 56 1/2-26 1/2 vote.

The National JACL Board is scheduled to meet next Oct. 10-12 at the new JACL Bldg. in San Francisco. One had been planned for mid-summer but due to high cost of convening the board — over \$6,000 — the Executive Committee last month moved to postpone the board meeting into the next fiscal year, which starts Oct. 1.

8—Civil Rights hearing.

"That was before Sugiyama came in as president (and he should not be held accountable)." At this point, Nadine Hata appealed. "He was president-elect... Kojima countered that he couldn't be impeached as president-elect since "he's already passed that stage."

PSW's Motion

Orange County JACL president Mike Ishikawa repeated Ito's interpretation that the district could not impeach national officers and called for the National Board to investigate the charges or bill of particulars. "It is not for this council to determine whether anyone is guilty or not," Ishikawa reflected.

"Our job is not to determine whether or not there were any violations," Ishikawa continued. "It's the National Board's responsibility and we are recommending it does its job."

Kojima contended that the district's resolution should be persuasive enough for the National Board to discern whether to call an open hearing or not.

The vote was 13-9 for the Mar. 9 PSW resolution to investigate the charges and concerns made against the National President and the National Director as recorded in minutes. Ishikawa moved, seconded by Amy Ishii for Hollywood.

Previously Ed Tokeshi of San Gabriel Valley moved to "impeach the President and remove the National Executive Director" but it was withdrawn after a compelling plea from former national president George Inagaki of Venice-Culver not to antagonize the entire national organization. "Impeach" has a harsh ring "when you consider he is only a volunteer and not a paid officer," Inagaki said.

Commiserating with Sugiyama, Inagaki felt he had done a lot of things when he was on the National Board that "before a body like this today, I wouldn't have stood a chance."

Continued on Next Page

JACL Subscribers

FEBRUARY, 1975 (No. 2)

The Pacific Citizen acknowledged 4,309 subscriptions from 61 chapters during the month of February as follows:

Arizona — 112 Parker — 55
Chicago — 40 Pasadena — 39
Cincinnati — 62 Philadelphia — 20
Cleveland — 35 Placer City — 121
Cleveland — 22 Portland — 36
Cleveland — 144 Redwood — 44
Con Costa — 14
Cortez — 76 Sacramento — 129
Dayton — 47 St. Louis — 91
Detroit — 25 Salinas — 12
Detroit — 4 San Benito — 1
Downtown — 9 St. Bernardino — 132
East La. — 22 St. Gabriel — 145
Edin. Wash. 110 St. Jose — 157
Ft. Worth — 41 St. Louis Obis — 20
Fremont — 22 St. Mateo — 151
Gardens — 30 St. Mary — 13
Glenview — 37 St. Maria — 13
Hollywood — 19 Seabrook — 35
Imperial — 9 Seattle — 148
Los Angeles — 129 Selma — 38
Long Beach — 63 Sequoia — 30
Metro L.A. — 96 Spokane — 25
Mid-Coll. — 96 Twin Cities — 25
Mil-Hi — 40 Ventura — 15
St. Paul — 30 Wash. — 13
St. Paul — 30 Wash. DC — 19
St. Paul — 30 West L.A. — 161
Omaha — 18 West Valley — 35
Orange City — 15 Wichita — 47

San Jose Japanese plan for Bicentennial

SAN JOSE, Calif. — Japanese cultural events will be a part of the 17-month U.S. Bicentennial celebration being observed here with the Japanese community's activities scheduled for the last weekend of March and first weekend of April, 1977.

The Bicentennial celebration here will climax Nov. 29, 1977, according to Richard Tanaka, executive committee chairman for the Japanese group, which has adopted "Kiaen" (Celebration) as the theme. Rep. Norman Mineta (D-Calif.) is honorary chairman.

The reunion, which will be held July 26-31, is the first time the event is being staged east of the Rockies. Heretofore, they have been held either on the West Coast or in Hawaii.

Tying in

Frying Pan

THE RESILIENCY OF MAN

New York
On the second of two recent evenings in New York, Joe Grama was telling how happy he was to be back in the big city. He had lived here since the war years, running an Oriental foods store up near Columbia University. A couple of years or so ago he sold the store and moved to Cincinnati, and while the folks in the town on the Ohio were friendly enough, there just didn't seem to be enough of them. So he and his wife Sammy returned to Manhattan, where they both work for a travel service, and Joe feels at home again amid the throngs in the impersonal concrete canyons.

I had an opportunity, brief as it was, to rub shoulders in a manner of speaking with the people who give Joe a sense of belonging, of being home. Most of the two days here were spent on the Columbia campus, and since the cab fare from Midtown to the university runs about five bucks, a horrendous sum for us smalltown westerners. I braved the subway each morning. They charge only 35 cents a ride.

Most subway commuters at that hour are southbound to the office of Midtown and Lower Manhattan. The northbound trains, which I took, were relatively uncrowded, but for one accustomed to seeing the distant peaks of Colorado the press was almost stifling. What impressed me more than the congestion was the feel-good graffiti that adorned every wall of the subway cars. Sometime long ago the rapid transit people must have given up and decided to let the graffiti stay. It adds a certain raffish air to the

Aloha from Hawaii

By RICHARD GIMA

Honolulu
Because Guam lies on the other side of the International Date Line, the official start of the nation's Bicentennial celebration was observed there on March 1 — almost a day ahead of the mainland U.S. A sixth grader from Guam, Patrick Guzman, stopped briefly here en route to Washington, carrying a proclamation from the Governor of Guam declaring that the observance of the nation's 200th birth has begun. Guzman also delivered a proclamation from Hawaii Gov. George Ariyoshi "to come together as a nation."

Lt. Gov. Nelson Doi and Gov. Ariyoshi get along well but as of Mar. 1, they have not agreed on what the lieutenant governor's role in government should be. One area Doi feels he can tackle successfully is human development or services provided for people. He was on Kauai Mar. 1 meeting with construction and labor officials who are worried about the slowdown in industry and resulting unemployment.

Honolulu Scene

Five destroyed much of the Fort Shafter Officer's Club Mar. 2. The kitchen and dining room were a complete loss. Joy Yamashita, 17, plunged 16 floors to her death Mar. 3 from the top of the State Senior Citizens Apartment at 1220 Aala St. . . . Iolani School jazz band topped 16 other high schools to win their division competition (enrollment under 100) at the 14th annual Reno International Jazz Festival Mar. 7-8 . . .

Neighbor Islands

June Lizaola is the first woman hired by the Kauai police department. She had been a part-time clerk in the department for more than a year. . . . Donald Hilla, who started an auto rental business in Honolulu in 1969, has expanded his outlets on five islands but for Molokai's picturesque trail to Kalaupapa, it'll be "rent-a-mule" as he had 22 mules flown in from the mainland.

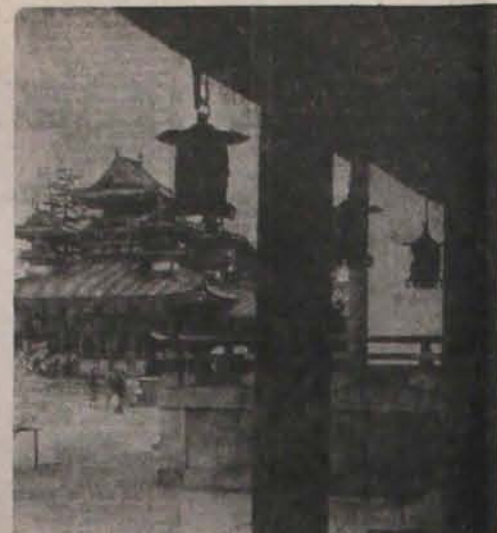
Maui Land & Pineapple Co. reported its best year ever. Its 1974 net income rose to \$17.7 million, up from \$15.1 million in 1973. . . . Honolulu physician Robert Thorburn, 54, sustained injuries Mar. 9 in a skiing mishap atop Mauna Kea on the Big Island.

Univ. of Hawaii

Five UH scientists, sealed in a large cylinder Mar. 1, started a month-long study on what happens to the human body & mind under intense deep-sea (500-ft. below sea level) pressure. With world population increasing at a rapid rate, scientists believe man must learn to farm the oceans. . . . Faculty members continue to press for higher salaries. It has been reported the state raised its offer from 11% to a 25% increase. The bargaining agent first sought a 47% increase and that dropped to 30%. . . . The much-discussed West Oahu campus may be cooled down after the feasibility study is completed in 1978, if the state administration proposal is accepted by the legislature.

Hawaii in the News

A Dept. of Education official, Ralph Iwano, told the Club 100 that Hawaii's education system is the best in the world. . . . The Hawaii State Library is planning a new building. . . . The Hawaii State Library is planning a new building. . . .



SHINTO SHRINE—The colorful Heian shrine in Kyoto is a replica of the first Imperial Palace dating back to 794, built in 1895 to commemorate the 1,100th anniversary of the founding of Kyoto by Emperor Kanmu. Participants in National JACL Flights to Japan going in the fall will long remember the Jidai Matsuri held at this shrine on Oct. 22, which Japan Travel Bureau International can arrange.—JNTO Photo.

Nat'l JACL bowling tournament reset for July 29-Aug. 2 in El Cerrito

SAN FRANCISCO—Due to a conflict of dates with the Nisei Week bowling tournament in Los Angeles during August, the 29th annual National JACL Bowling Tournament has been shifted to July 29-Aug. 2, it was announced today by Tad Hirata, National JACL 1000 Club Chairman.

The Golden Gate Lanes in El Cerrito has been chosen as the site of the JACL bowling tournament. Rules and regulations and entry blanks will be mailed out to all JACL chapters and leagues throughout the country later this month, according to Hi Akagi, tournament coordinator.

During the forthcoming National JACL bowling competition, bids for the 1976 and 1977 tournament will be accepted and a new National JACL bowling advisory committee will be named, Hirata added.

The official sponsor of this year's tournament will be the National JACL 1000 Club as mandated by the National Board.

1st J.A. nat'l bowling

tournament concluded

By MASAO SATOW

SAN JOSE, Calif. — Masao Uekura of Japan and Karen Gonzales of Sacramento emerged as all-events champions of the new Japanese American National Bowling Tournament held here Mar. 2-8 at Futurama Bowl.

Jerry Enomoto, in his new role as director of the Calif. Dept. of Corrections, commented informally on the tournament as well as his new job, which comments were well received by the 400-plus audience at the awards banquet.

The tournament's advisory board hailed all week over the eligibility of non-Japanese participants and agreed that those who bowled in any previous JACL national tournament are eligible, provided they had not missed two consecutive years.

The next tournament will be hosted by the Hawaii Nisei Bowling Assn. at Show-

Gila River reunion

SAN FRANCISCO — Former classmates of Canal High School at Gila River WRA Center will hold a reunion dinner-dance Aug. 9-10 at Bimbo's 365 Club. In charge are:

Class of '43-Julia (Bell) Neill, 1964 Darius C. San Leandro 94577; Class of '44-Kimi (Doi) Toji, 1281 Delaware St. Berkeley 94702; Class of '45-Kaz (Deguchi) Nishida, 2132 Oregon St. Berkeley 94703.

Tax Time - See Us

National JACL Credit Union
Mail: P. O. Box 1721, Salt Lake City, Utah 84110
Office: 242 S. 4th East, Salt Lake City
Tel.: (801) 355-8040

Remember you can borrow \$3,000 on your signature with a qualified credit rating.

Low cost new auto loans!

Sumitomo Bank of America

Member FDIC

Chapter Pulse

Installation

Jane Taubel heads the 1975 Pasadena JACL cabinet, which was installed Feb. 22 at George Lim's Restaurant in New Chinatown. Dr. Roy Nishikawa was installing officer, City View Hospital administrator Edwin Hiroto was guest speaker and Mack Yamaguchi, outgoing president, as emcee.

To keep the affair at very informal level, board member Harris Ozawa gave the invocation and benediction; officers stood up at their own places to be installed and there was no head table.

Scholarship

Students in the San Fernando Valley JACL area have until April 7 to apply for one of the local JACL scholarships. School counselors in the valley have pertinent information.

The chapter is also sponsoring a scholarship benefit theater party May 18 at East-West Players to see Ibsen's social play "A Doll's House."

May Events

Gardena Valley JACL has started its search in the South Bay area for a Nisei Week queen candidate who will be selected at the chapter coronation ball May 17 at the Proud Bird Restaurant.

Applicants must be single, between 18 and 22, of Japanese ancestry and agree to the queen committee contest rules. Applications are available at Pola, 15204 S. Western Ave. or from Shirley Yamasaki (378-9732) and Mayko Tarumoto (329-4931). Local deadline is April 20.

Candidates this year will be introduced to Helen Funai's "Shi Zen" program.

April Events

Western regional staff member Mike Ishikawa of the U.S. Civil Rights Commission office at Los Angeles will be guest speaker at the April 26 general meeting of the Riverside JACL. It will be held at UC Riverside's International Lounge from 7:30-9 p.m. The speaker is also Orange County JACL president.

San Fernando Valley JACL, with the Pacific Southwest JACL District Council as co-sponsors, will host an open forum on an evacuee reparations bill April 26, 8 p.m., at the SEV Japanese American Community Center, 12953 Branford, Pacoima, with Paul Tsunehiro presiding.

Among the panelists will be Edison Uno of San Francisco, prime advocate for reparations since the 1970 National JACL Convention, and Call Nishio, National JACL youth director who, as acting Washington JACL representative last year, became familiar with the Danielson bill (HR 15717) which was the initial attempt for reparations — though its benefits were too limited.

Chapter president Phil Shigekuni has invited district-wide participation to help gauge area interest in reparations.

March Events

Currently on leave from Michigan State where he is chairman of the Anthropology Department, Prof. Iwao Ishi-

no was guest speaker at the Washington, D.C. JACL meeting Mar. 22 at Argyle Recreation Center at Silver Spring, Md. He spoke on the origins of the Japanese race, language and culture. Dr. Ishino specializes in Asian anthropology and is currently director in anthropology with the National Science Foundation.

Elliot Eki, a Nickel reporter for the Channel 6 TV News, was guest speaker at the Portland JACL potluck dinner and get-acquainted party March 15 at the Oregon Buddhist Church.

Seleno JAY's has been reactivated with its first meeting set for Mar. 28, 7:30 p.m., at Seleno JACL chapter president Clarence Nishizu's office (Westmont Realty), 6855 Western Ave., Buena Park. Mary Tayenaka and Yasuko Kuriyama, advisers, have extended an open invitation to area young people.

February Events

Teruo Matsumoto, MD, PhD, professor of surgery at Philadelphia's Hahnemann Medical College, spoke on acupuncture at the Feb. 16 Philadelphia JACL general meeting held at Bryn Mawr College.

There were 125 present to hear the nationally-recognized speaker on the subject in the U.S., entertainingly relating the role of the ancient Chinese art in the therapy of pain. Dr. Matsumoto is also a member of the AMA committee on acupuncture.

Wine and cheese, cider and crackers — plus good Japanese

green tea were served after the meeting, which saw the election of new board members for a two-year term.

Tom Seng (who was chosen the first JACL president of Korean ancestry), Shiro M. Kashiwara, Raymond Masters, Russell D. Meel, Sun Endo (treas.), Allen Okamoto (newell).

West Valley JACL's first social of the year on Feb. 2 — potluck dinner and square dancing — was enjoyed by 60 people. Betty Shibayama and Terrie Kaneko were in charge of the dinner; perennial caller Duane Nelson succeeded in teaching beginners in square dancing.

1975 Officers

POCATELLO-BLACKFOOT JACL
Bob Endo, pres; George Sato, vp; Shin Kawamura, treas; Kae Nishida, sec; Alice Konishi, aux pres; Jona Endow, Potluck pres; bd mem—Tom Morimoto, Kazuo Endow, Jon Sato, Paul Okamura, Kent Shiozawa, Kunito Yamada.

RIVERSIDE JACL
Mahla Bristol, pres; Jack Nakagawa, pres-elect; Linda Kato, treas; Katherine Kumamoto, sec; Marie Arakaki, memb; Akiko Lombard, hst; Etsu Ogasawa, hospital; Dr. Shokel Yamada, Frank Takatori, Peter Sasaki, memb-at-lg.

ST. LOUIS JACL
George Sakaguchi, ch; Nikki Kato, vp; Ed Taglia, treas; Jane Bonfanti, sec; Ted Jungenberg, memb; bd mem—Susie Yakuuchi, Dr. Milton Fujita, Dr. Mark Takano, Linda Ishibashi, Mae Marshall, Yuki Kikunaga (ex-officio).

SAN GABRIEL VALLEY JACL (Up-dated)
Jane Sabara, pres; Harry Mizoguchi, vp; Tomi Tokushige, treas; Ralph Maeda, sec; Margaret Takemoto, cor sec; bd of dir—Kiko Hiramami, Sam Inai, David Ito, Fumi Kiyasu, Eniko Kurokawa, K. S. S. O. Edwards, Marvel Miyata, Ed Ojima, Edward Tokeshi, Denti Uejima.

Quote of Note
Experience proves that those are oftenest abused who can be abused with the greatest impunity. Men are whipped oftenest who are whipped easiest.—Frederick Douglass.

JACL Bldg. Fund Pledges and Contributions

Acknowledgement from 89 donors: Feb. 1-28, 1975

\$1 - \$50 Hisako Akizawa, Oak Tom Katsunami, SJ John S. Kaneko, SFV Al Kataoka, Sel Ryoichi Keikano, Sac. In memory of Kane Keikano Phil K. Kimura, SJ Victor F. Kimura, SJ Osamu K. Kobayashi, Gar Harry Koike, SFV James Kojima, SJ Sam I. Kono, Sac Harry Kurokawa, Sel Eddie Matsui, FRC George S. Matsumoto, Sac Grace Matsumoto, SF Edwin Molnau, Oak Takemi, Misaki, Sel Kiyoshi Umai, Sac Robert A. Inai, MIH Steven M. Ishibashi, Sou Iwao Ishino, WDC Howard S. Iwai, SJ	Stanley Iwai, Art Mike Kado, GIL Tom Katsunami, SJ John S. Kaneko, SFV Al Kataoka, Sel Ryoichi Keikano, Sac. In memory of Kane Keikano Phil K. Kimura, SJ Victor F. Kimura, SJ Osamu K. Kobayashi, Gar Harry Koike, SFV James Kojima, SJ Sam I. Kono, Sac Harry Kurokawa, Sel Eddie Matsui, FRC George S. Matsumoto, Sac Grace Matsumoto, SF Edwin Molnau, Oak Takemi, Misaki, Sel Kiyoshi Umai, Sac Robert A. Inai, MIH Steven M. Ishibashi, Sou Iwao Ishino, WDC Howard S. Iwai, SJ	M. Nagasawa, SJ K. Nakano, GIL Tom Nakata, FRC John S. Kaneko, SFV Betty S. Okazaki, Sel Tubher Okuda, SLC Ben Ono, Sel Ben C. Ojima, SLC Yoshio Otani, Son John Otomo, Sel Richard Otani, WY Harold Sano, Con Tadashi Sakuma, WM Rentaro Sugi, Con Roy Tullip, SFV M. Takaguchi, SFV S. Tanaka, FRL Tomio Taniguchi, Sel Tom and Mary Tokuhiwa, Chi M. N. and Chizu Uchida, Mar Frank Wallman, Str Bobbie Watanabe, SRV George Watanabe, Sel	Larry Watanabe, Sel Mitsuyo Yamahara, Mem Kiyasu Yamamoto, Sel Ken Yamazaki, GIL Sam Yamazaki, GIL Empire Egg Co. Inc. Son Raymond K. Kozaki, SF Samuel R. Maehara, (LA) Tom Masamoto, MIH Ishiko Maki, (SF) Richard S. Oginaka, SLC Coffee H. Oshima, Sac Fred T. Takagi, S C. Takahashi, S Steve Teukamoto, Pos Tomoyo Teukamoto, Sac West Valley JACL, FRL Jim Yamaguchi, FRL Edu - 800 Rod and Dorothy Kobara, WV \$1,996 - \$2,999 Harold Kikunaga, SD Yone Satoda, SF
---	---	---	--

FRIENDLY SERVICE

THE MITSUBISHI BANK OF CALIFORNIA

HEAD OFFICE

800 Wilshire Blvd., Los Angeles, Calif. 90017 (213) 623-7191

LITTLE TOKYO OFFICE

321 East Second St., Los Angeles, Calif. 90012 (213) 680-2650

GARDENA OFFICE

1600 W. Redondo Beach Blvd., Gardena, Calif. 90247 (213) 532-3360

SAN FRANCISCO OFFICE

425 Montgomery St., nr. California (415) 788-3600

Member FDIC

Japan Charter Flights

Sponsored by Nat'l Japanese American Citizens League

FLY JAPAN AIR LINES TO TOKYO—NEW REVISED SCHEDULED

NJACL Flt Dates	Departing from	Roundtrip Fare	Aircraft/Capacity
No. 2—Apr 9-Apr 30	San Francisco	\$434**	DC8/132 Sold Out
No. 3—Jul 23-Aug 20	San Francisco	\$434	DC8/152
No. 7—Sep 28-Oct 20	San Francisco	\$445	DC8/152
No. 5—Oct. 2-Oct 25	Chicago	\$522	DC8/152
No. 4—Oct. 6-Oct. 27	L.A. and S.F.	\$456	747/250-361

** All prices include Round Trip Airfare, \$3.00 Airport Departure Tax, and \$25.00 JACL Administrative Fee. All seats (adult and child alike) are the same price on any one flight. Infants under two years who will be carried during the flight will be charged 10% of the listed flight fare. All fares may be subject to change.

FLY Japan Air Lines



TOUR with Japan Travel Bureau International

OPEN TO ALL BONAFIDE JACL Members, Their Spouse, Dependent Children and Parents

JACL AUTHORIZED RETAIL TRAVEL AGENTS
For Land Tour arrangements, documentation and customer service, contact one of the following Authorized Travel Agents:

SEATTLE	SAN FRANCISCO	TANAKA TRAVEL SERVICE	SOUTH BAY TRAVEL CENTER
Kawaguchi Travel Service 711 Third Ave. 300 Dexter Horton Bldg. Seattle, Wash. 98104 (206) 422-5520 Michiko Kawaguchi	Abi Travel Service 22 Peace Plaza, Suite 204 San Francisco, Calif. 94115 (415) 367-1114 Kaz Kataoka	San Francisco, Calif. 94102 (415) 474-3500 Frank Y. Tanaka	John or Kay Dunkle
KINOMOTO TRAVEL SERVICE	EAST & WEST TRAVEL	SAGURA TRAVEL BUREAU	SUGANO TRAVEL SERVICE
605 S. Jackson St. Seattle, Wash. 98104 (206) 422-2342 Frank or Mark Kinomoto	391 Sutter St., Suite 601 San Francisco, Calif. 94108 (415) 398-5777	511 Second Ave. San Mateo, Calif. 94401 (415) 342-7494 Jim Nakada	17 E. Ohio St. Chicago, Ill. 60611 (312) 944-5444 Frank Takeko Sugano
PORTLAND	KINTETSU WORLD EXPRESS, INC.	SAN FRANCISCO-EAST BAY	YAMADA TRAVEL
Azumoto Travel Service 200 S.W. 4th Ave. Portland, Ore. 97204 (503) 223-6245 George I. Azumoto James K. Iwasaki	1737 Post St. San Francisco, Calif. 94115 (415) 923-7171 Ich Taniguchi	Jio's Travel Service 2451 Grove St. Berkeley, Calif. 94704 (415) 845-1977 Shigeru Jio	812 N. Clark St. Chicago, Ill. 60610 (312) 944-2730 Dick Yamada
SACRAMENTO	NIIPPON EXPRESS U.S.A., INC.	LOS ANGELES	MIYASAKI TRAVEL AGENCY INC.
Miyamoto Travel Service 2401 Fifteenth Street Sacramento, Calif. 95818 (916) 441-0030 Jerry Miyamoto	Sacramento, Calif. 95818 (415) 982-4955 Henry Oe	327 East 1st St. Los Angeles, Calif. 90012 (213) 544-5454 Frank Takata	401 Seventh Ave. New York City 10001 (212) 760-1300 Chiye Miyasaki
SAN JOSE	SENO TRAVEL SERVICE, INC.	NEW ORLEANS EXPRESS	NEW YORK TRAVEL SERVICE
Travel Planners 205 Galleria, #1, Suite 200 San Jose, Calif. 95110 (408) 287-5220 Clark Takata, V.P. Sales Mgr.	150 Powell Street San Francisco, Calif. 94102 (415) 985-5752 M. Ishiguro	3405 Wilshire Blvd. San Mateo, Calif. 90036 (415) 937-2146 Giro Takahashi	535 Fifth Ave. New York City, N.Y. 10017 (212) 687-2683 Stanley T. Okada Toru J. Kanazawa

