

# PACIFIC CITIZEN

Publication of the National Japanese American Citizens League

Vol. 86 No. 8

Friday, March 3, 1978

20¢ Postpaid U.S.

15 Cents

BY BAKKE DECISION

## Asian Americans seen least affected

LOS ANGELES — Asian Americans will be the least affected minority group if the U.S. Supreme Court rules in favor of Allan Bakke in his reverse discrimination suit against the University of California, Yori Wada said recently.

Wada, the Buchanan YM-CA executive director recently appointed to the UC Board of Regents by Gov. Brown, told members of the Christ United Presbyterian Church, that most applicants of the two Asian backgrounds are able to enter the UC through regular enrollment channels.

Bakke, a 37-year-old engineer, filed a discrimination suit against the UC Davis medical school charging he was denied admittance because lesser-qualified minority applicants were accepted instead. The State Supreme Court ruled in his favor, striking down a UC special admissions program which reserves 16 of 100 medical school openings for minority applicants.

Bakke's case is now pending before the U.S. Supreme Court.

Wada said those most affected by a pro-Bakke decision would be the Chicano Americans, American Indians, blacks and whites from rural areas, who are also considered a "disadvantaged" group.

Though Japanese Americans and Chinese Americans are not eligible under the university's special admissions programs for graduate schools, Wada said a sufficient number has been

entering the graduate programs through regular channels.

Wada added, "However, there are a few campuses and some graduate schools, notably in the sciences, where you can find few Asian names on their list of students."

Controversy may ensue over the eligibility of Asian Americans as special admissions in undergraduate

courses, Wada said, because enrollment figures show the students can qualify for admission under regular conditions. He said he expects discussion on this subject soon.

Following the forum, Wada said he thought the Supreme Court might refer the Bakke Case back to the state courts for a new decision.

## House hearing on A-bomb survivors bill being planned

LOS ANGELES—Sentiment regarding legislation which will aid survivors of the atomic bomb now living in the U.S. will be probed here by a congressional committee in late March.

The bill, HR 8440, sponsored by Rep. Norman Mineta and Edward Roybal, would extend medical aid to about 400 survivors of the Hiroshima and Nagasaki bombings. The bill is being proposed for the second time.

PSWDC Governor Paul Tsuneishi urged JACL mem-

bers to show support for the pending legislation to Rep. George Danielson before the hearings.

Chairpersons Kanji Kuramoto and Kaz Suyeishi of the Committee of Atomic Bomb Survivors, are now preparing about 20 witnesses to appear before Danielson's committee.

## Calipatria support for principal remains strong

CALIPATRIA, Calif.—Community support for Dr. Miyoshi Ikeda, whose contract as principal of Calipatria High School was terminated recently, has remained strong despite general feelings the school board will not reverse its Feb. 9 decision, Glen Isomoto, PSWDC regional director, said.

After a two-day visit to Calipatria, Isomoto reported that regard for Dr. Eddie Ikard, superintendent of the Calipatria Unified School District and the man Ikeda has been at odds with, has diminished among local residents. Some have gone so far as to question the administrator's reasoning capabilities in the matter.

Ikard's objections to Ikeda's disciplinary and educational philosophies were the main impetus behind the principal's transfer to a teaching post within the district (PC, Feb. 24).

Isomoto said the superintendent rarely socialized with the Calipatria community and had spurned invitations to become involved in

## National JACL Board meets Mar. 11-12

SAN FRANCISCO—A preview of business confronting the National JACL Convention this July at Salt Lake City is likely to be spotlighted here next weekend when the National Board meets Mar. 11-12 at Headquarters.

District governors are expected to have their caucus meeting on Friday evening as JACL leaders are expected to check in at that time. President Jim Murakami is calling the board to order on Saturday morning at 9 and adjourn Sunday afternoon.

A preliminary agenda released Feb. 21 by Karl Nobuyuki, national executive director, includes discussion on:

Young/Chin legal defense fund, Saburo Kido memorial scholarship, immigration policy, Nikkei talent registry, U.S.-Japan trade relations, budget, program staff, convention schedule, personnel recruitment and membership.

local civic groups, leading to speculation Ikard did not feel comfortable with the racial composition of the small rural community. Isomoto added there was talk Ikeda was terminated because of subtle racism, but so far allegations have not been substantiated.

JACL will continue to exert the necessary pressure to effect a change in the school board's decision, Isomoto said, and will provide legal aid should the case go to court.

"Dr. Ikeda has asked us to be low-keyed in our role," Isomoto said. "He feels he has the support of the community and wants to proceed one step at a time. He said he will give us the 'go-ahead' when he wants more help."

Isomoto said he found support for Ikeda among parents, local politicians and students—both student body officers and "rowdies". "When you have the support from a broad spectrum of students, you know he must be doing a good job, no doubt," Isomoto said.

## Teacher denied promotion faces dismissal in June

SANTA ANA, Calif.—A UC Irvine pharmacology instructor who was denied promotion to an associate professorship and now faces termination in June, is requesting that irregularities in his case be reviewed by the school's Divisional Committee on Privilege and Tenure, according to his attorney.

Dr. Norio Kokka was denied the promotion of tenure in the Dept. of Medical Pharmacology and Therapeutics (Pharmacology and Neuroendocrinology) by the UCI Budget Committee. A subsequent appeal was rejected by Vice Chancellor James McGaugh and Assistant Vice Chancellor Carl Hartman.

Kokka's attorney Tim Stafford has compiled a "slew of material" indicating UCI disregarded the "unanimous and enthusiastic" recommendations of the Ad Hoc Committee to promote Kokka to associate professor.

(Review policy at UCI is maintained through objective appraisal by faculty members of each candidate for appointment or promotion, according to the Aca-

demic Senate Manual. Responsibility for appraisal lies with the Ad Hoc Committee, which is nominated by the Committee on Budget and Interdepartmental Relations.)

Stafford wrote to UCI Chancellor Daniel G. Aldrich Jr. Feb. 10, charging "massive improprieties and irregularities" in Kokka's review for tenure violated his right to a fair review. Stafford requested a hearing date be set with the Divisional Committee on Privilege and Tenure, but as of yet has had no response from the chancellor.

Should a hearing be denied, Stafford said there is a good chance a suit will be filed against the university. He added possibilities of discrimination are being explored, however certain details need to be verified to ensure such a charge is warranted.

Kokka has been employed at UCI approximately 4½ years and prior to that taught at UCLA, according to Stafford. Because the instructor was initially demoted and then terminated, Stafford said he was not sure of Kokka's official job classification with the school.

knowledge of the letter and maintains Self would have had grounds for grievance had he been fired after receiving such a supportive letter from Ikard. The superintendent said the letter was not one of endorsement, but merely an acknowledgment of Self's efforts and regretted Ikeda did not receive a copy, speculating a clerical mix-up occurred.

—Ikeda has maintained Ikard is a "man of contradictions" and cannot understand why, even as late as Dec. 14, 1977, Ikard said "I was still one of the best administrators in the valley." Ikard told Ikeda he did not want him to "leave, resign or be reassigned," that he "just wants to make me even more competent." Because of this, Ikeda said there is no rationale for his dismissal as principal. Ikard, however, explained the school's disciplinary problems needed "action" and that Ikeda was not keeping adequate control over the students. The superintendent still acknowledges Ikeda as a capable administrator.

## Stockton JACler in bid for Congress

STOCKTON, Calif.—Norman Shumway of Stockton, chairman of the San Joaquin County Board of Supervisors and member of the Stockton JACL has officially announced his candidacy for the Republican nomination for congressman from the 14th district.

(Shumway was author of the Stockton Japanese community history which appeared in the 1969 PC Holiday Issue.)



Los Angeles County Supervisor Ed Edelman (left) congratulates longtime Downtown L.A. JACler Edward Matsuda, elected recently to serve a third term as president of the Japanese Chamber of Commerce.

## Internment credit boosters eye S.224

SAN FRANCISCO—The Committee for Internment Credit, while elated over passage of their bill (HR 9471) in the House last January (see Feb. 3PC), has shifted its efforts on a similar measure in the U.S. Senate.

Senators Daniel Inouye and Spark Matsunaga of Hawaii are co-sponsors of S. 224, which would grant civil service retirement credit to Japanese Americans in the federal service for time they spent in internment camps during World War II.

Though the 366-12 action in the House passing Rep. Norm Mineta's bill was described as a "great milestone" by the CIC, impetus to press for prompt action in the Senate must continue, committee members

said this past week.

Federal workers, active or retired, their friends and supporters, organizations were all being urged to write their respective senators so that S. 224 is approved in this session of Congress.

Senate bill S. 224 is pending in the Senate Governmental Affairs Committee. Members are:

Abraham A. Ribicoff (Conn), chairman; Henry M. Jackson (Wash), Edmund S. Muskie (Maine), Thomas F. Eagleton (Mo), Lawton Chiles (Fl), Sam Nunn (Ga), John Glenn (Ohio), Jim Sasser (Tenn), Muriel Humphrey (Minn), Charles H. Percy (Ill), Jacob K. Javits (NY), William V. Roth, Jr. (Del), Ted Stevens (Alaska), Charles McC. Mathias, Jr. (Md), John C. Danforth (Mo), H. John Heinz III (Pa).



## pc's people

### • The Arts

St. Louis JACler Carol Frumhoff mounted a unique Japanese needlepoint (Rozashi) exhibit at Craft Alliance's William Stix Friedman Gallery in University City, Mo. It was on display for a month from Feb. 9. She also authored an article on the "Imperial Household" hobby in the Nov. 1977 issue of "The Flying Needle", magazine of the National Standards Council of American Embroiders.

Curtis Choy, a soundperson and co-founder of Chonk Moonhunter Productions has been awarded a \$10,000 project grant from the American Film Institute. He will begin immediate production on a documentary "Manongs: Tenants of the I-Hotel." Fellow filmmakers include Christopher Chow, Emiko Omori and Debbie Gee.

### • Business

Dr. Yonekazu Abe, a past president of the San Bernardino Rotary Club and active Riverside JACler, will accompany five local businessmen and professionals to Japan on a Rotary Foundation exchange project. During the five week exchange, the group will study the economic, social and cultural characteristics of Japan. A team is comprised of five non-Rotarians, between ages 25 and 35. Abe will serve as the district governor



representative. He is also chairman of World Community Service for Rotary District 533, which includes San Bernardino and Riverside counties.

### • Courtroom

Yasuo Yoshida, 51, of Los Angeles, was indicted with six other Mattel Toys, Inc. officials by the federal grand jury for allegedly falsifying records to boost the value of company stock. Yoshida, a former Mattel vice president, was named for one count in the indictment. Defendants, including Mattel co-founder Ruth Handler, were free on personal recognizance bonds. The indictment charged Mrs. Handler with reporting \$10 million worth of non-existent business for Mattel within five years.

### • Education

Judith Kaya, a fifth grade teacher at Moanalua Elementary School was

Continued on Page 11

## Wendy trying regain sense of freedom, her niche as an artist

SAN FRANCISCO—Wendy Yoshimura, the once obscure artist who was propelled to notoriety through her connections with Patricia Hearst, is trying to sort out the question marks plaguing her future.

"It's hard to make long-range plans for a job and lasting relationships with this cloud hanging over my head," she told the San Francisco Examiner on the anniversary of Hearst's kidnapping in February, 1974.

Yoshimura, 35, has been free on \$50,000 bail, pending an appeal since a January 1977 conviction on explosive and weapon-possession charges.

Then hiding from charges of having what police called a "bomb factory" in Berkeley, Yoshimura and Hearst were arrested in September 1975.

"On the surface, my life seems normal now," she said. "I try not to think about what's going to happen to me, about the appeal. If I did, it would only block my efforts to put the pieces of my life back together after so much trauma and chaos."

Trying to put the past behind her has been difficult, she said, because "people only think of me as Patty's roommate and not as an artist."

"I'll fill out an application and people will see my name and raise their eyebrows a little," she said.

"I'm not in jail doing time and I'm not involved in a trial, but mentally I don't feel normal or free. A normal life means all the regular things to me—a fulltime job, maybe marriage and children, time to relax and reflect.

"But more, it means having a sense of freedom in my head," she continued, "which is something I haven't got right now."

Yoshimura was sentenced to state prison for up to 15 years after she was convicted of possessing a machine gun, explosives and various materials.

The cache was found in a garage she had rented under an assumed name and police said she was part of a terrorist conspiracy.

## Enomoto sees need for more prisons

SAN DIEGO, Calif. — The Brown Administration wants an emergency appropriation of more than \$1 million from the legislature to help curb drugs used in prisons and to beef up intelligence gathering on prison gangs, Jerry Enomoto, director of the State Department of Corrections, disclosed recently.

Enomoto said the money will be used to buy an "emit machine" for each of the state's 12 prisons to randomly check inmates for drug use.

Noting increasing prison populations will add 7,000 inmates to the state system by 1983, Enomoto said new data is being prepared to substantiate the need for more prisons. "As I talk to people around the state, I hear more and more people want more criminals locked up," he said, "but if we talk about putting a prison near them, they back off."



## The Silver Certificate Account

To help commemorate our 25 years of service to California, Sumitomo is offering the Silver Anniversary Certificate Account. \$1,000 or more in this one-year Time Certificate of Deposit earns 6%\* per annum and provides the following benefits...

- Checking account—no monthly service charge
- Customer new car loan rate
- Postage paid bank-by-mail
- Silver Certificate identification card
- A very special anniversary gift

\*FDIC regulations impose substantial interest penalties upon premature withdrawals.

The Sumitomo Bank of California

Member FDIC

## The Mitsubishi Bank of California

Member FDIC



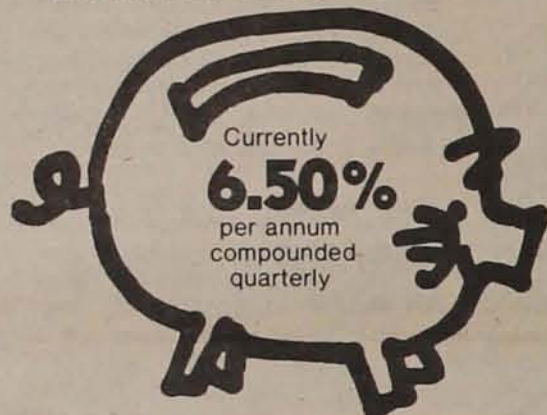
Little Tokyo Office

321 East Second St., Los Angeles, Calif. 90012

(213) 680-2650

## SAVE WITH US

AND GET FREE LIFE SAVINGS INSURANCE COVERING YOUR SHARE BALANCE UP TO \$2000.



## National JACL Credit Union

PO Box 1721

Salt Lake City, Utah 84110

Telephone (801) 355-8040

Borrow up to \$3000

on your signature to qualified borrowers.

## YEAR END TAX PLANNING IRA and KEOGH

### PLANS FOR BOTH INDIVIDUALS AND SELF-EMPLOYED

If you work for someone and are not covered by a qualified retirement plan — or are self-employed Merit Savings has a plan to help you retire with greater financial independence taking full advantage of tax benefits enjoyed by corporations and other large companies. This year, a SPOUSES IRA has been approved. A SPOUSES IRA is an alternative account which an employed IRA participant can establish for a non-employed

spouse, who has received no wages during the year. Generally, two separate IRA accounts are maintained. Contributions up to \$1,750 or 15% of the working spouse's compensation, whichever is less, are permitted. The amount contributed should be equally divided between your account and that of your spouse.

For example, a contribution of \$1,750 would require that \$875 be deposited to each account.



IRAとは勤めている方で現在加入されていない個人が年間収入の15%又は\$1,500.00のいずれか少ない方の金額を積立てることができる退職年金制度です。又、このプランは税金控除になるという特典があり配偶者でも加入することが出来ます。詳しいことは各支店で御問い合わせ下さい。

Let us help you plan for tomorrow. Please call Merit Savings Retirement Dept.

**MERIT SAVINGS AND LOAN ASSOCIATION**

MAIN OFFICE (213) 624-7434 • TORRANCE (213) 327-9301 • MONTEREY PARK (213) 266-3011

## "Each customer I meet is a challenge..."

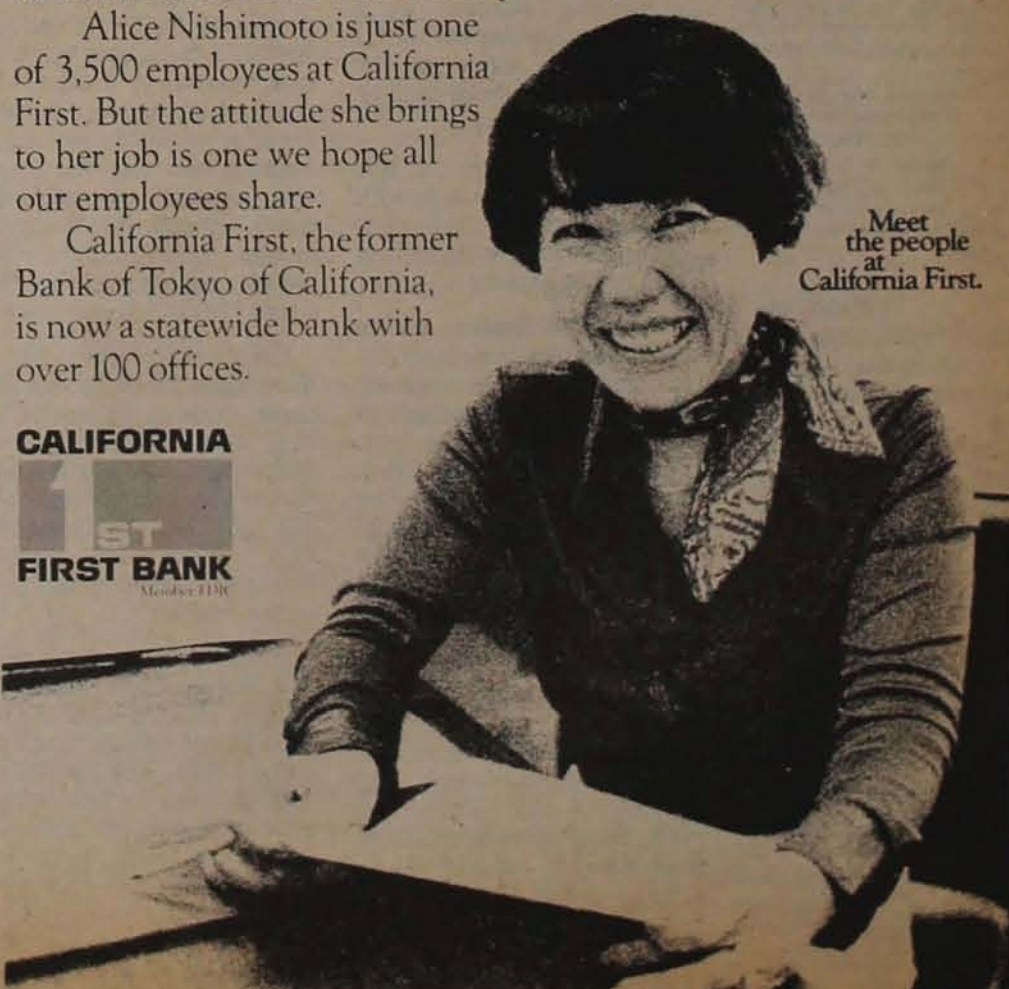
"As a customer service representative, I meet many kinds of people, both old and young. When they come to me with a banking problem, it makes me happy when I can introduce them to one of our services that suits their needs perfectly."

Alice Nishimoto is just one of 3,500 employees at California First. But the attitude she brings to her job is one we hope all our employees share.

California First, the former Bank of Tokyo of California, is now a statewide bank with over 100 offices.

**CALIFORNIA**  
**1ST**  
**FIRST BANK**  
Member FDIC

Meet the people at California First.





# Comments, letters & features

## Anti-Quota Initiative

Lawrence E. Walsh, former Democratic state senator from Downey, Calif., is circulating petitions in an effort to qualify a ballot initiative which would outlaw racial or ethnic quota systems and affirmative action programs. At least 499,846 valid signatures of registered voters are needed by May 4 on the petitions for the initiative to make the November general election ballot in the State of California. It reads:

"No state university or state college or any school division of either shall admit any student, or deny any student admission, on account of race, religion, sex, ethnic background, or previous condition of servitude of his ancestors. No admission shall be permitted or denied upon a quota system and affirmative action program or any other rule or policy which considers or gives any priority or disqualification whatsoever to persons because of their race, religion, sex, ethnic background or the previous condition of servitude of their ancestors."

The same wording is applied to employing or denying employment to any person and awarding or refusing to award public and private contracts.

The initiative would also prohibit court orders in conflict with the prohibitions, except for orders against a specific party to correct clearly established and precisely delineated conduct.

It also says it should not be construed to abridge the freedom of any religious body or persons in the conduct of religious functions.

If it qualifies—and the promoters are optimistic of success because of major interest in the Bakke Case—the initiative

could be a ticklish problem for all public officials who might be asked to take a position on it while running for re-election. Incumbents and candidates leaning for help from the Supreme Court decision may not get it as the court could, in the meantime, remand the case for further review.

But what can upset this initiative, even if qualified and subsequently passed, is action by the U.S. Supreme Court which, in the past, has found some initiatives unconstitutional. Just because the majority is for it does not always make it right.

—Harry Honda

### JACL Auxiliaries

A brief reference uttered by Mitsu Sonoda at the recent West Los Angeles JACL installation about officially recognizing women auxiliaries "nationally" makes good sense when you realize all the time and talent they and other women have given to the JACL as a whole. That the statement came the same week the National Women's Conference was being held at Houston was only coincidental.

What is required is a simple amendment to the national JACL constitution to have "women auxiliaries" recognized among the organizational components. What their prerogatives are would need to be clarified. The youth in JACL—JAYS—are already recognized with representation on the National Board.

In the scheme of Japanese American social history, women's groups have provided the human touch to community life. They would complement rather than compete inside JACL.



DOWN TO EARTH: Karl Nobuyuki

## Convention Issues

With the 25th biennial Convention approaching rapidly, it is vital that we seriously examine some of the key issues that must be faced by our organization. It is a matter of priorities and how these priorities should be addressed.

### REPARATION

On the programmatic side of the coin, REPARATION still looms as the chief priority of the National organization. The last biennial convention reinforced the commitment as the various delegates echoed the call for this confirmation. The matter at hand now is the approach.

Indeed, the issue of REPARATION is not an easy one. Yet, it is imperative that we emphasize the nature of the American citizenship of our organization. REPARATION is not just a Japanese American issue; rather, it is an American issue that falls upon the shoulders of the Japanese American. It is greatly interrelated to the administration of "National Security" mandates and its impact on the civil liberties of American citizens. REPARATION then represents a major challenge to all of us.

### YOUTH

While the topic of "youth" often finds its way into the conversation of our membership, very little has been done to identify the scope of our interest. A clearer definition of the age bracket of "youth" we intend to serve is paramount. Closer working relations between the "parent" group and the JAYS must be enhanced and closely incorporated into the scenario of our youth movement.

I would suggest a long-standing commitment to the development of Multi-Cultural Education and Curriculum as a possible issue that would test the inner-working of the

JAYS and the JACL. We must close the gap that presently exists.

### U.S.-JAPAN RELATIONS

The growing hostility between the United States and Japan cannot escape attention. While focusing largely upon the balance of trade problems between the two countries, the ramifications of this international conflict finds its way directly to the Japanese American.

The issue of "U.S.-Japan trade relations and its impact on Japanese Americans" is one that must be examined closely and carefully.

While it is true that since the war, Congress has passed legislation specifically to promote "reciprocal people-to-people understanding between the United States and Japan" and concurrently created the Japan-U.S. Friendship Commission, the shortcomings in the administration of the law (PL 94-118) and the commission itself preclude any truly effective approach. Thus far the commission is silent in addressing the barrage of racist caricatures and articles that are directed towards the issue of United States and Japan relations.

Staff at National Headquarters and various regional operations are finding that young children of Japanese ancestry are accused of "starting World War II" and that Pearl Harbor was the fault of their parents. There is still much to do.

### GETTING THE HOUSE IN ORDER

Getting organized is the first issue at hand. Matters involving litigation and errors in management still plague the organization and must be corrected to put JACL back in the business of serving our membership. Loopholes in procedures (e.g. personnel)

Continued on Next Page



EAST WIND: William Marutani

## Let My People Go

Bill Marutani is stoking the minds of JACLers preparing for the National Convention. He has written several pieces to date, which will appear a week at a time.

On the same note, veteran conductor of the "Washington Newsletter", Mike Masaoka, has been invited to resume his column as a "follow-up" to his "tell it like it is" feature in the last Holiday Issue on matters that the National JACL Council ought to address.—Editor.

### Philadelphia

I once remember as a child, my mother relating the story of two women who claimed a child as theirs, thus leading to a custody battle. They took their dispute to a wiseman (my memory is vague on this, perhaps it was some *tono-sama*) who placed the child between the two women and directed them to tug the child between them. And as the child cried out from the resulting pain, one of them—who so loved the child as only a natural mother could—released the child rather than have it suffer pain. And the wiseman awarded the child to that woman, rather than to the contest winner.

It's "funny" how these little stories stick in one's mind. After all these years,

And so it was in later years when I was reading the Bible, I read of another wiseman, Solomon, who settled a custody fight, between two contending women, in a somewhat similar fashion: *I Kings 16-28*. Love is the same, whether from the Far East or in the Bible.

Now the reason all this comes to mind has to do with JACL leadership, believe it or not. Let me explain. Or at least try to explain.

There are leaders within JACL's ranks, well-motivated and dedicated leaders, who remain committed to JACL with an abiding love. They love JACL so much that they are reluctant to let go, and they persist in hanging on. While I've not taken a survey, I am confident that they exist at all levels of the JACL hierarchy: the chapters, the districts and the national leadership. With all their love and dedication, they nonetheless "remain in the saddle", thereby discouraging new leadership, new blood, new visions from moving in.

All-too-often this well-meaning leadership feels that it knows best—all the while trying to guide the organization with views and

theories of the '40s and '50s—indeed, in some instances of the '30s.

Now this doesn't necessarily mean that just because a proposed leader is chronologically fresh that his views are visionary. I think the past record may well demonstrate that we've had some leaders who were young and who brought concepts with them that retarded the JACL organization. And so what we are suggesting is not that mere "youth" is a solution.

On the other hand, what we do suggest is that these old-time leaders, dedicated as they may be, must begin to relinquish their stifling hold on the organization at all levels—so that the organization can begin to breathe. Breathe some fresh air, some new air.

There will be some reading these very words to whom all this applies, but who do not realize that it applies to you. You are not immortal; you are not eternal. And, yes, you are not indispensable. Helpful, yes; indispensable, no.

If you truly love JACL and what it could stand for, you will relinquish your grip. Before it is too late. And it is mighty late already.

### Films Wanted

Editor:

Where can I go to borrow the 442nd film that was taken at Camp Shelby? It was shown in the relocation camps during the war. And there was a movie made about JA's during the war. (Milton) Eisenhower made it to show why the relocation of JAs was necessary. Where can this be obtained?

FRANK OKUSAKO

2404 Madre NE

Albuquerque, NM 87112

Can someone help him?—Ed.

### Postscript for 'Fryer'

Editor:

The little green bird told me to write an addition to Bill Hosokawa's article (Feb. 3 PC) of "From the Frying Pan."

His grandpa Omura was head of "Mikawa Mura" for more than 30 years. During his days, there was a flood every September, washing away bridges and roads. He contributed his own pocket money for repairs. He was respected by his people for his outstanding character and personality. "Yoi Soncho san", he was.

Another reminder is that of BH's "Nisei", (Quiet American) concerning the "Kibei" group. According to his book, "Kibeis" were more-less of imperial system's puppets without Americanizing themselves, causing complications to the Nisei World. Well, I'm a Kibei girl, and resided at Seattle from 1932-37. We had a "Kibei Nikkei Shimin Kyokai", publishing the magazine "Kibei Shimin" monthly. Most of the members had education in Japan first. Number of Kibeis have graduated from universities and they were more of moderate personality. In 1936, "Kibei Nikkei Shimin Kyokai" merged with local JACL.

In 1937, I moved to San Francisco and joined Japanese YWCA. The late Miss Kimi Mukaye urged me to form a "Kibei" Echo and we named it "Wakakusa Kai". Due to the language barrier, some of the girls had difficulty to mingle with Nisei elements although there was no touch of discrimination. All of the members of Kibei group in S.F. were in JACL, headed

by late Saburo Kido.

SK had couple of Kibei as his board members in '40. (Los Angeles must be the most radical Japanese minded resources.) Bill was away from Seattle after graduating from UW that he had no chance of getting acquainted with Seattle JACL system then.

JOAN OMURA

Kings Park, LI, N.Y.

Joan adds that she is Bill Hosokawa's cousin.—Ed.

### Labels from PC

Editor:

Many thanks for the labels for our Cortez JACL Chapter. I have used the pressure-sensitive labels at the Cortez Growers Association office for many years so I know how good and easy it is to use them. We made our labels on the Burrough's bookkeeping machine for our growers.

Now that you have this service, it will certainly save time for us and we appreciate it very much. I hope other chapters will realize how wonderful it is that someone is doing something for us!!

S. PAT SUGIURA

Turlock, Ca.

### Short Note

Editor:

I especially enjoy Sachi Seko's sensitive, moving and honest feelings expressed in her writings.

AIKO YAMAMOTO

Berkeley, Ca.

## 35 Years Ago

IN THE PACIFIC CITIZEN

March 4, 1943

Feb. 24—Oregon state senate goes on record as favoring the deportation of all residents of Japanese ancestry from this country and the barring of all Nisei from the U.S. armed services, according to the Oregon Journal.

Feb. 25—John Francis Kawasaki, 16, and his sister Cecilia Bernadette, 17, are arrested in Los Angeles after they ran away from the Poston Relocation Center. The boy said they decided to hitchhike to L.A. on the spur of the moment "to see some friends".

March 4—JACL charges that California "race-baiters" deliberately misrepresented facts when they used the "dual citizenship" issue in attacking loyal Japanese Americans.

March 4—U.S. immigration rule that Hollywood actress Joan Fontaine is a subject of Japan and cannot obtain American citizenship papers until after the war. Fontaine was born of British parents in Japan.

March 4—Army Sgt. Frank Fujita, a Texas-born Japanese American who fought against the Japanese army in the battle of Java, is reported captured by the enemy in the Philippines, according to his family. He is reported missing after the fall of Netherlands East Indies to the Japanese.

Sign Up One New JACLer



PACIFIC CITIZEN

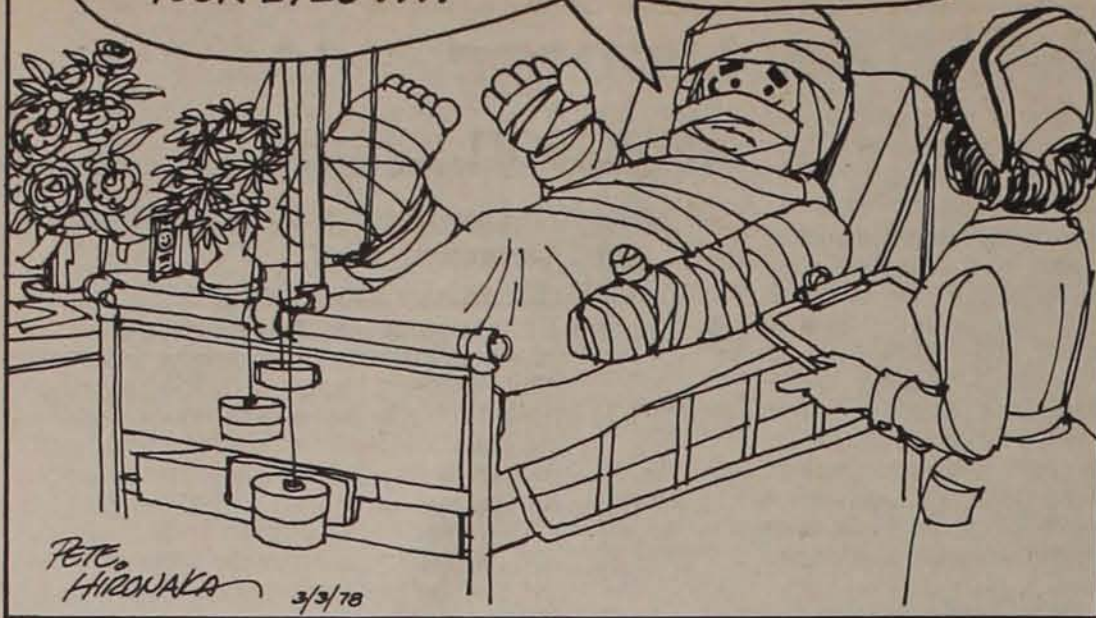
Published weekly except first and last weeks of the year at 355 E. First St., Los Angeles, Calif. 90012 (213-626-6936)

James Murakami, National JACL President  
Alfred Hatate, PC Board Chairman  
Harry K. Honda, Editor

Second class postage paid at Los Angeles, Calif. Subscription rates payable in advance: U.S. \$9 year; foreign \$13 year. First Class available upon request. \$5 of JACL membership dues for one year subscription through JACL Headquarters, 1765 Sutter St., San Francisco, Calif. 94115 (415-921-JACL). News and opinions expressed by columnists, except JACL staff writers, do not necessarily reflect JACL policy.



ALL I REMEMBER IS .... LANDING IN CALIFORNIA ... GOING TO A BAR ... ORDERING A DRINK AND SAYING 'INTO EACH LIFE SOME RAIN MUST FALL' AND 'HERE'S MUD IN YOUR EYES' ....



## NOBUYUKI

Continued from Previous Page

must be mended and organizational procedures must be clarified to preclude the recurrence of past problems. These difficulties cannot be understated and must be addressed.

Presently, it appears that the flaws that have been endured in the past will place a hard financial burden on all of us. Assuming that the total cost borders \$30,000 above anticipated expenses means that some 2,500 members have paid their annual dues only to off-set the cost of weak management. It's no secret that it will be necessary for the organization to seek a significant increase in membership dues. This will be the only way that JACL can effectively deal with the variety of issues that face us and concurrently allow us

to make the structural improvements that are necessary.

But just as important as the increase in revenues is the need to strengthen the PROCESS by which we operate. Money alone will not be the panacea. Stern commitment and cooperative involvement will be the key. Your Board and EXECOM have begun to address these areas, but they will need the support of the membership if they are to be effective.

### THE TIME IS NOW

The forthcoming 25th biennial Convention is unique. It signifies that every other year for half a century, Japanese Americans from throughout the United States have come together to discuss matters of mutual interest and concern. The time is now for us to set our priorities and solidify our commitments.

## JACL Okubo-Yamada Fund

At the 1970 National Convention in Chicago, two JACL youth delegates were victims of a brutal and senseless crime. Evelyn Okubo (age 18) was murdered by an unknown assailant and Ranko Carol Yamada (age 17) was near death after being severely assaulted. It was a miracle that she survived.

JACL is committed to assist the two Stockton families with legal expenses in their lawsuit against Hilton Hotels, which owns and operates the Palmer House. No funds raised will be used for attorney's fees.

Seven years following the tragedy the legal battle continues. Will you join us in support of these families?

### OKUBO-YAMADA LEGAL ASSISTANCE COMMITTEE

George Baba, Co-Chairperson  
Frank Oda, Co-Chairperson

### OKUBO-YAMADA FUND HONORARY COMMITTEE

Jerry Enomoto (Sacramento)  
Ross Harano (Chicago)  
Dr. Harry Hatasaka (Sequoia)  
Dr. Terry Hayashi (San Francisco)  
Mas Hironaka (San Diego)  
Kaz Horita (Philadelphia)  
Frank Iwama (Sacramento)  
Dr. John Kanda (Puyallup Valley)  
Helen Kawagoe (Gardena Valley)  
Takeishi Kubota (Seattle)  
Mike Masaoka (Washington, D.C.)  
Bill Matsumoto (Sacramento)  
James Murakami (Santa Rosa)  
Em Nakadoi (Omaha)  
Dr. Roy Nishikawa (Wilshire)

Patrick Okura (Washington, D.C.)  
Shirley Matsumura Ota (San Jose)  
Dr. Frank Sakamoto (Chicago)  
Yone Satoda (San Francisco)  
Tom Shimasaki (Tulare County)  
Shigeki Sugiyama (Washington, D.C.)  
Mike Suzuki (Washington, D.C.)  
Judge Robert Takasugi (East Los Angeles)  
Henry Tanaka (Cleveland)  
Dr. Tom Taketa (San Jose)  
Dr. Kengo Terashita (Stockton)  
Judge Raymond Uno (Salt Lake City)  
Shig Wakamatsu (Chicago)

Please make checks payable to:  
"JACL Okubo-Yamada Fund"

and mail to

JACL National Headquarters  
1765 Sutter Street  
San Francisco, California 94115

Your cancelled check  
will be your receipt.

Contributions are  
tax-deductible.

**YES!** I support the Okubo and Yamada families.

Date \_\_\_\_\_

Enclosed is my contribution of:

☐ \$5. ☐ \$10. ☐ Other \$ \_\_\_\_\_

Name \_\_\_\_\_

Address \_\_\_\_\_

Chapter \_\_\_\_\_



FROM THE FRYING PAN: Bill Hosokawa

## JACL History

Denver, Colo.

As readers of the Pacific Citizen learned last week, a Masao W. Satow Memorial Committee has been set up with Mike M. Masaoka as chairman. Its purpose is to honor the memory of Mas Satow, who served so long and diligently as national executive director of the Japanese American Citizens League. Contributions to carry on this work are now being solicited.

As one part of the memorial project, the history of JACL is to be researched, written up and published as a book. I have been invited to undertake this work and have accepted with pleasure and not just a little humility.

It is a commentary on our times that even an organization as young as JACL—its official birth year is 1930—has retained very little record of its origins and activities. Oh, yes, there are plenty of records about conventions held and resolutions passed. But these are sterile facts that must be fleshed out with details about people and personalities, the color and feel of the way of life that made an organization like JACL necessary, the hopes and ideals and frustrations and controversies that made JACL what it was and is.

This is the kind of information that must be gathered if the JACL story is to be more than a dry compendium about an organization.

Where does a writer go to get this kind of human detail?

There is only one source—you, all of you who lived JACL history and have deep in your memories delightful stories about JACL and the people who made it work.

And so I am asking each of you to get that information to me. Write me a letter, and never mind the grammar which is my department. Send me copies of old clippings or newsletters. Pick up the telephone and call me with your recollections.

Maybe several of you can get together for a "remember when?" bull session; well,

just turn on a cassette tape recorder and send me the tape.

Tell me such things as how you became interested in JACL, why you joined and became active in it, what frustrated you about it, and what you found to be proud of it as an organization.

Tell me about your recollections of people who made JACL function, starting with Mas Satow, and including fellows like Sab Kido, Jimmie Sakamoto, Doc Yatabe, Clarence Arai, Mike Masaoka and all the others too numerous to mention here.

Tell me about your hopes for the organization, what ticked you off about JACL, and why you faithfully kept sending in your dues year after year when you were so unhappy with the way it was going.

And tell me about the funny things that happened. Anecdotes make a story come to life, and they are the most difficult things to dig up.

Unfortunately not all the material I hope you will send me will find its way into the book. Inevitably there will be much duplication. The material forwarded to me must be weighed in relation to all the information that becomes available. This will be the story of a 50-year-old organization that went through some stirring times with a cast of tens of thousands; only a few of whom can be mentioned in the 140,000-odd words of the manuscript.

Perhaps a word about Mas Satow's role is necessary. The project is in memory of Mas, but the book will not be a biography of Mas. It will be the story of the organization to which Mas Satow dedicated his life, and I feel that a record of its accomplishments will be the finest tribute to Mas and all that he stood for.

Please communicate with me in writing at my office address: P.O. Box 1709, Denver, Colo. 80201. If you need to telephone, call in the evening: (303) 297-1729. I won't be able to acknowledge all letters, but I'll get back to you by mail or in person if I need additional information.

Thanks for all your help. I'll need all the assistance I can get. □

## REPARATION

JACL NATIONAL COMMITTEE

PART 15

¶Let's quit living in the past and expend our energies and resources on now problems. (Detroit)

¶Opposed to JACL spending so much time on issues of the past at the expense of not working on current problems. (Chicago)

¶There are many other worthwhile projects JACL can devote their efforts at this time. (Male, 55, Sacramento)

By CLIFFORD UYEDA

There is a myth existing about any national organization that depends on volunteers to staff and move programs.

The myth is that an existence of one program diminishes the quality of another. That there are only limited number of volunteers who can get involved in the programs.

The bodies and talents out there are limitless. The problem is how to get them motivated enough to participate. The more participation the more effective the organization becomes.

JACL is involved in many programs—

## More the Merrier

and more the merrier. Increase in programs means increase in membership participation.

Most programs are performed and accomplished on shoe-string budgets. When the blanket boycott tactic to save the whales resulted in racism toward Japanese and Japanese Americans, the JACL Whale Issue Committee fought this with vigorous educational programs.

Within the past six months all major U.S. conservation organizations have withdrawn their support of the boycott tactic. Over three years of intense campaigning has cost the JACL less than \$500. The only cost to JACL was in the use of the Xerox machine and in mailing.

The entire activity of the JACL National Committee for Iva Toguri did not cost the JACL treasury a single cent. It was done with the work and contributions of hundreds of volunteers. And we were all enriched by the experience.

There are many more projects JACL should undertake. The greater the number of programs being worked on simultaneously, the healthier the organization. Membership participation enhances, enriches and strengthens JACL. □

## Salt Lake's Great in 78!

25th Biennial National JACL Convention  
July 17-22, 1978 • Little America Hotel,





# Calendar, pulse & memos



Neal Taniguchi (left), Hoover High School (Fresno) junior, receives the \$500 Fresno JACL scholarship to attend the 1978 Presidential Classroom for Young Americans meeting the week of Feb. 26 in Washington. Norman Otani (right) makes presentation during the chapter CYA benefit dinner-dance. The son of Dr. Izumi and Barbara Izumi is a 4.0 GPA honor student, active in the ecology club, debate team and other campus clubs and a volunteer worker at a day care center, library and at St. Agnes Hospital.

## AWARD

Continued from Page 2

Kumeo Yoshinari was the chairman for the National Testimonial and remains Chairman of the Masaoka Fund Committee.

Any individual or JACL chapter or district council may submit as many nominations as it desires. Nominations should include the reasons for that particular

nomination and background information concerning the individual or organization nominated. Nominations may be sent to the Washington JACL Office, Attention: Masaoka Public Service Award, Suite 204, 1730 Rhode Island Avenue, Northwest, Washington, D.C. 20036. Nominations must be received at the Washington JACL Office not later than Monday, May 1.

## Deadlines

- Japanese, American of the Biennium—Nominations by Mar. 31, JACL Hq; presentation at Convention, July 22, Salt Lake City.
- Nat'l JACL Scholarship (Freshman-Graduate)—Forms, support papers by April 1, JACL Hq; announcement in June.
- JACLer of the Biennium—Nominations by May 1, JACL Hq; presentation at Convention, July 19, Salt Lake City.
- Nat'l Convention Agenda proposals—Chapter input by Feb. 28, JACL Hq.
- Amendments to JACL Constitution—Notify Nat'l Director 60 days prior (June 5). NC-WNDC chapter input by May 7, Regional Office.
- Nominations for Nat'l Officers—District nominations 90 days prior (April 23).
- Budget/Convention Agenda from Hq—30 days prior (June 19).
- Inagaki Prize—Entries from JACL Chapters by June 1, JACL Hq.
- Cultural Heritage Fellowship applications due April 15, Nat'l Hq.
- Okubo-Yamada Fund, June 30, Nat'l Hq.
- Masaoka Distinguished Public Service Award nominations, May 1, Washington JACL Office, Suite 204, 1730 Rhode Island Ave NW, WDC 20036.

## Calendar

\* A non-JACL event

- MAR. 3 (Friday)**
  - \* Monterey Park—Sage Single Mingles mtg, Sage United Methodist Church, 7:30 p.m.; Dr. Marion Fukuda, spkr, "Single's Feelings".
- MAR. 4 (Saturday)**
  - \* NCDYC—Spring Qtrly, Eden AAYs host, (2 days), Sat—Workshop, Sun—Mtg, Easter party at Agnews St Hosp.
  - \* Los Angeles—Westside Optim Las Vegas Night, Vet Mem Hall, Culver City, 7:30 p.m.
  - \* Sacramento—Camellia Fest Int'l exhibit, Sac to Comm Ctr.
  - \* Seattle—Workshop on Women, St Peter's Epis Church.
  - \* Berkeley—Spring Nocturne dance, Gold Rm, Oakland Aud.
  - \* Are County—Reno fun tour (2 days).
  - \* Marin County—Mtg, Marin Buddhist Church, Mill Valley; Dr Clifford Uyeda, spkr, "Reparation".
  - \* Salt Lake—Auxy dnr, Northwest Multi-Purpose Ctr, 6:30 p.m.
- MAR. 5 (Sunday)**
  - \* West Los Angeles—Auxy Cookbook reception, Yamato Restaurant, Century Plaza, 2-4 p.m.
  - \* Salinas Valley—Sr Cit Fujinkai luncheon.
- MAR. 6 (Monday)**
  - \* Denver—JANBA bowling tournament (all wk), Celebrity Lanes.

Fresno—Bd mtg, Cal 1st Bank, 1330 E Shaw, 7:30 p.m.

**MAR. 10 (Friday)**  
Nat'l JACL—Bd mtg (3 days), Hq, San Francisco.

\* Los Angeles—Buffet dnr for Sac to Councilman Robert Matsui, International Club, World Trade Ctr, 6 p.m.

\* Los Angeles—Agape Fellowship Forum: Bakke Case, 332 S. Virgil, 7:30 p.m.

**MAR. 11 (Saturday)**  
\* Sacramento—Camellia Festival parade, Downtown, 10 a.m.

\* Florin—Teryaki booth, Florin Center Mall, 10 a.m.-6 p.m.

Fresno—Lake Tahoe trip (overnight).

French Camp—Auxy sushi sale, St Louis—Memb Drive potluck supper.

\* Marysville—Bok Kai Festival and parade, 11 a.m.

\* Denver—JANBA tourn dnr, Marriott Hotel.

**MAR. 13 (Monday)**  
\* Long Beach—Foods of Japan, Stearns Park, 8 p.m.

**MAR. 18 (Saturday)**  
San Jose—Bridge party, Wesley United Meth Church, 7:30 p.m.

\* Los Angeles—WAO inst dnr-dance.

\* Seattle-NVC inst dnr, Sherwood Inn.

## 1978 Officers

### CHICAGO JACL

Chiye Tomihiro, pres; Ken Katarhira, Niel Tashima, vp (prog); Catherine Catania, vp (memb); Ron Yoshino vp (budg-fin); Hiro Tokubo, vp (pr); Gilbert Furusho, treas; Carol Yoshino, cor sec; —, rec sec.

### INTERMOUNTAIN DISTRICT

John Tameno (Sna) gov; Al Kubota (SLC) 1st vg-memb; Hid Hasegawa (Ida) 2nd vg-prog/actv; Saige Aramaki (MtO) treas; Chiyo Morita (SLC) sec; George Kimura (SLC) ex-officio; Margaret Hasegawa (Ida) parlia; Frank & Sadie Yoshimura (MtO); Dean & Amy Hayashida (Boi) youth; Ron Yokota (Boi) PC Bd rep; Yuki Harada (Ida) PC corr; Ted Matsushima (WFn) reparation; Bob Endo (Poc) hist; Jim Uno (SLC), Jean Hirai (Boi) youth co-ch; Kerri Iseri (Sna) scholarship; Yoshiko Ochi (Ida) comm for aged; Alice Kasai (SLC) recog; Ben Aoyagi (SLC) insurance; Ken Teramura (Sna) dist funding.

### NEW MEXICO JACL

Ron Shibata, pres; Marica Kobayashi, Dennis Miyoshi, Chris Porter, vp; Jeanne Ebina, sec; Shirley Togami, treas.

### POCATELLO-BLACKFOOT JACL

Masa Tsukamoto, pres; Karl Endo, 1st vp & schol; Kunio Yamada, 2nd vp; Marie Proctor, treas & memb; JoAnne Higashi, rec sec; Sanaye Okamura, cor sec; Bob Endo, del; Alice Sato, alt del; Shin Kawamura, Alyce Sato, past pres; Mike Abe, George Sato, Paul Okamura, Dick Kanow, Kazuo Endow, bd memb; George Sumida, nwlstr; Mikie Mori, Emi Matsura, spcl sv; Kae Sumida, Alice Konishi, calling comm.

### SAN JOSE JACL

Ray Akamine, Dennis Akizuki, Ellen Beppu, Perry Dobashi, Judy Niizawa Ellwanger, P.J. Hirabayashi, John Higaki, Kathleen Hironaka, Mel Honda, Mike Honda, Linda Ito, Judy Kadotani, Kenneth Kai, Karl Kinaga, Al Kogura, Jan Kurahara (pres); Roy Kusumoto, Wendell Mesawa, Helen Mineta, Yosh Morimoto, Aiko Nakahara, Ko Nishimura, James Ono, Jiro Saito, Eiichi Sakauye, Tad Sekigahama, Grant Shimizu, Karen Shiraki, Gail Tagashira, Tom Taketa, Ron Uchishiba, Sharon Uyeda, Kats Watanabe, Joe Yamaguchi, Steve Yamaguma, Stan Yamamoto, Nori Yamasaki.

### SAN MATEO COUNTY JACL

Suzi Kunitani, pres; Douglas Ota, Akiko Docker, vp; Yosh Kojimoto, treas; Grayce Kato, sec; Yasuko Ito, imm past pres; bd memb—Thomas Grubbs, Thomas Konno, Shigeki Mori, Richard Nakanishi, Kiyo Okita, Junko Prindle, Ernie Takahashi, Terence Terauchi, Florence Yoshiwara.

### SANTA BARBARA JACL

Mike Hide, chmn; Tom Yanagihara, vc; Ikey Kakimoto, treas; Hatsume Kosakai, cor sec; Jane Uyesaka, sec; Reiko Uyesaka, memb; Hiro Goto, ins; Dr. Norman Nyung-Han, parlmn; George Ohashi, H. Kosakai, bd memb; Tom Hirashima, schol; Go-ro Takeuchi, Mas Matsumura, Mamoru Takeuchi, Dennis Tokumaru, David Wakumoto, John Suzuki.

### SEATTLE JACL

Ted Taniguchi, pres; Paul Isaki, 1st vp; Eira Nagaoka, 2nd vp; Chuck Kato, 3rd vp; Mitch Matsudaira, 4th vp; William Ishii, treas; Ruth Yoneyama Woo, cor sec; Ken Nakano, hist; Cherry Kinoshita, del; bd memb—Helen Akita, Frank Fujii, Phil Hayasaka, Gil Hirabayashi, Harry Kadoshima, Chris Kato, Ron Mamiya, Min Masuda, Jo Matsumoto, John Matsumoto, Mitsie Mihara, Bruce Miyahara, Henry Miyatake, Tomio Moriguchi, Ben Nakagawa, Hiro Nishimura, Roy Ogosowara, May Sasaki, Jerry Shigaki, Sam Shoji, Mas Tomita.

amount of this year's award will be raised to \$400. The JACL is indeed grateful to Mrs. Kato for her support.

Judging is based on a point system which takes into consideration the student's academic record, financial need, and extracurricular activities. School transcripts, a financial need statement, and one letter of reference must be submitted along with the application form. All applications must be postmarked no later than April 1, 1978.

Forms may be obtained

## Party to thank cookbook helpers

LOS ANGELES—Those who contributed recipes to the West Los Angeles JACL Auxiliary's East-West Flavors II cookbook will be honored at a "thank you" tea party on Sunday, Mar. 5, 2-4 p.m., at Yamato Restaurant at Century Plaza Hotel. Featured will be some 20 dishes from the book for sampling, according to Chieko Inouye and Marian Susuki, cookbook co-chairpersons.

Cookbooks I (\$5.25) and II (\$8) are obtainable from: West L.A. JACL Auxiliary, 1431 Armacost Ave., Los Angeles, Ca 90025.

### SEQUOIA JACL

Amy Doi, pres; Eugene Kono, 1st vp; Cherry Adachi, 2nd vp; Kenneth Tsuboi, rec sec; Harold Ueda, cor sec; Miho Yamane, treas; Bud Nakano, del; John Enomoto, alt del; Albert Nakai, 1000 Club; Ken Fujii, Blue Cross; Dr. Harry Hatasaka, hum rel; Adrian Itaya, memb; Ernest Murata, youth coord; David Oku, nwlstr; Sumi Sumida, pub; Bruce Hori, Sakaye Okamura, David Takamoto, Tom Yamane, David Yoshida, bd memb.

### SNAKE RIVER VALLEY JACL

David Mizuta, pres; Reid Saito, pres-elect; Ron Yano, 2nd vp; Carl Iseri, treas; Frances Shoda, sec; George Hirai, recog; Frances Nishimura, hist; R Saito, del; Mary Wakasugi, Fred Kuwahara, Tom Murata, social; Joe Kino, Kiyohide Hori, F Kuwahara, Dr Iwasa, Ben Imada, schol, Boys and Girls State.

### STOCKTON JACL

George Baba, pres; Ruby Dobana, vp; Mary Kusama, rec sec; May Saki, cor sec; Grace Nakata, treas; Amy Matsumoto, hist; George Matsumoto, insur; Calvin Matsumoto, 1000 Club; James Tanji, memb; Bill Shima, schol; Mitsie Baba, social; Edwin Endow, pub; George Matsumoto, Endow, del; Harold Nitta, alt del; Board Mem—Ted Yoneda, Dr. Ken Fujii, Henry Kusama, Dr. James Tanaka, Bob Yamada, Tad Akaba, Mabel Okubo, and Teddy Saiki.

### TWIN CITIES JACL

May Tanaka, pres; Susan Tsuchiya, 1st vp prog; Sam Honda, ret. pre, PR; Sylvia Yasuda, rec sec; Tom Evans, treas; Kiyoshi Ishibashi, memb; Tosh Abe, 1000 Club; Kimi Hara, schol; Gloria Kumagai, youth; Ed Sako, JAYS pres, youth chrmn; Tom Hara, legal; Dr. Frances Shirota and Marian Tsuchiya.

### WEST VALLEY JACL

Helyn Uchiyama, pres; Ed Kawahara, 1st vp; Howard Watanabe, 2nd vp; Art Okuno, treas; Betty Takeshita, rec sec; Jean Kurasaki, cor sec; Dorothy Kobara, Rose Tsunekawa, Issei program; Steve Nakashima, nwlstr; Aki Shishido, Tom Yagi, teriyaki; Tom Miyamoto, fund-raiser; Sue Kamimori, June Miykusu, hospty; Bob Kaneko, ex-officio; Maurice Martin, mail; Jenny Yoshida, hist; Sally Nakashima, phone, Sharon Kawashima, pub; Heien Kono, Blue Cross; Dave Muraoka, clubhouse mgr; Tom Taniguchi, clubhouse treas; George Uchida, 1000 Club/ travel; Sumi Tanabe, schol; Dave Sakai, schol treas; Aron Murai, youth; Jane Miyamoto, memb; Rod Kobara, Ray Uchiyama, future prog.

## National scholarship applications due April 1

from any JACL chapter, from the National Head-JACL Regional Office, or quarters.

## Nationwide Business and Professional Directory

Your business card placed in each issue here for 25 weeks (a half year) at \$25 per three-lines. Name in larger type counts as two lines. Each additional line at \$6 per line per half-year period

Greater Los Angeles	Seattle, Wash.
<b>Asahi International Travel</b> 1111 W. Olympic, Los Angeles 90015 623-6125/29; Please Call Joe or Gladys U.S.A.-Japan-Worldwide AIR—SEA—LAND—CAR—HOTEL  <b>FLOWER VIEW GARDENS #2—New Otani Hotel</b> 110 S. Los Angeles St. LA 90012 Flowers/Gifts/Plants Deliveries City Wide Mgr Art Ito Jr Call (213) 620-0808  <b>NISEI FLORIST</b> In the Heart of Little Tokyo 328 E. 1st St. - 628-5606 Fred Mariguchi Member: Teleflora  <b>The PAINT SHOPPE</b> La Mancho Center, 1111 N. Harbor Blvd. Fullerton, Calif. (714) 526-0116  <b>YAMATO TRAVEL BUREAU</b> 321 E. 2nd St., Suite 505, L.A. 90012 (213) 624-6021	<b>IMPERIAL LANES</b> Complete Pro Shop—Restaurant & Lounge 2101-22nd Ave. So. (206) 325-2525  <b>GOLD KEY REAL ESTATE INC.</b> Homes and Acreage TIM MIYAHARA, Pres Call Collect: (206) 226-8100  <b>KINOMOTO TRAVEL SERVICE</b> Frank Y. Kinomoto 605 S. Jackson St. 622-2342

**GALA SUPERMARKET BAZAARS**

Gifts  
Cooking Utensils  
Imported Beverages  
Food delicacies  
Judo-Gi, Karate  
Pottery, China

**UWAJIMAYA**

Free Parking  
Seattle, 6th S. and Southcenter Store  
5 King St. Tukwila, Wa  
MA 4-8248 CH 6-7077

Watsonville, Calif.	San Jose, Calif.	The Midwest	Washington, D.C.
<b>Tom Nakase Realty</b> Acreage, Ranches, Homes, Income Tom T. Nakase, Realtor 25 Clifford Ave. (408) 724-6477	<b>EDWARD T. MORIOKA, Realtor</b> 3170 Williams Rd., San Jose Bus. 246-6606 Res. 371-0442	<b>SUGANO TRAVEL SERVICE</b> 17 E. Ohio St. Chicago, Ill. 60611 944-5444; eve/Sun 784-8517	<b>MASAOKA-ISHIKAWA AND ASSOCIATES, INC.</b> Consultant - Washington Matters 900-17th St NW, Rm 520, 296-4484

**Los Angeles Japanese Casualty Insurance Assn.**

— COMPLETE INSURANCE PROTECTION —

Aihara Ins. Agcy., Aihara-Omatsu-Kakita	626-9625
250 E. 1st St.	
Anson Fujioka Agcy., 321 E. 2nd, Suite 500	626-4393 263-1109
Funakoshi Ins. Agcy., 321 E. 2nd St.	626-5275
Hirohata Ins. Agcy., 322 E. Second St.	628-1214 287-8605
Inouye Ins. Agcy., 15092 Sylvanwood Ave., Norwalk	846-5774
Tom T. Ito, 595 N. Lincoln, Pasadena	795-7059 (LA) 681-4411
Minoru 'Nix' Nagata, 1497 Rock Haven, Monterey Park	268-4554
Steve Nakaji, 11964 Washington Place	391-5931 837-9150
Sato Ins. Agcy., 366 E. 1st St.	629-1425 261-6519

**Eagle Produce**

929-943 S. San Pedro St., Los Angeles  
625-2101

BONDED COMMISSION MERCHANTS  
— WHOLESALE FRUITS AND VEGETABLES —

Japanese Phototypesetting

**TOYO PRINTING CO.**

309 So. San Pedro St., Los Angeles 90013  
(213) 626-8153

**Nanka Printing**

Japanese Phototypesetting

2024 E. First St.  
Los Angeles, Calif.  
Phone: 268-7835

Three Generations of Experience

**Shimatsu, Ogata and Kubota Mortuary**

911 Venice Blvd.  
Los Angeles  
749-1449

SEIJI DUKE OGATA  
R. YUTAKA KUBOTA



# chapter pulse

## ● French Camp

French Camp JACL's Women's Auxiliary will celebrate its 30th anniversary this year by raising funds to purchase some banquet tables for the community hall, according to Kathy Komure, Auxiliary president. A sushi sale on Saturday, Mar. 11, will be held as the initial project. Chizu Nonaka and Fumiko Asano are in charge.

At the Auxiliary's first meeting Feb. 11, favorite recipes were sampled and exchanged.

## ● Fresno

Fresno JACLers are gearing up for a trip to Lake Tahoe, March 11-12. Cost is \$42.50 per person, which includes bus fare and accommodations at Lake Tahoe

Inn, adjacent to Harrah's. Package includes continental breakfast and open bar on bus.

Mike Iwatsubo, in spite of a busy schedule, will be giving bridge lessons to members. Iwatsubo recently attained the rank of master bridge player. There is no charge for five lessons, but students will be charged \$5 for hall rental at the Fresno Duplicate Bridge Club. For information, call Sumi Suda, 439-4495.

Dr. Ken Kurokawa, Fresno delegate to the CCDC meeting Feb. 5, reported the passage of a pro-Bakke resolution (with amendments) by the council. The resolution was originally proposed by Fred Hirasuna and essentially supports the Bakke position and hence, opposes the national JACL position.

## ● Livingston-Merced

April 1 has been set aside for the annual Livingston-Merced JACL Issei appreciation pot luck dinner. Entertainment will be provided by the Chidori Band from San Jose.

## ● Lodi

Lodi JACL installed its 1978 officers recently at a dinner-dance held at Hale Park. Lodi Mayor Walter J. Katnich administered the oath of office. James Ishida is the new chapter president.

Among honored guests present were:

George Baba, Stockton JACL pres; George Komura, French Camp JACL pres; George Kondo, NC-WNDC reg dir; Rev. Saburo Masada, minister, Calvary Presbyterian Church, Stockton; Seiji Tabata, vp & mgr, Cal 1st Bank, Stockton; and Jene Tamura, vp & mgr, Sumitomo Bank of Calif, Sacramento.

## ● Philadelphia

Karl Nobuyuki will be guest speaker at the Philadelphia JACL installation dinner on Saturday, April 29, 6 p.m., at Cinelli's Country House, Cherry Hill, N.J. Reservations at \$24 per couple (\$10 senior citizens or students) are being accepted by:

Reiko Gaspar, 540 S Melville St., Philadelphia 19143; and Sim Endo, 5932 Devon Pl., Philadelphia 19138.

## ● Pocatello

Masa Tsukamoto, elected to his sixth year as Pocatello-Blackfoot JACL president, was installed Jan. 30 at a smorgasbord dinner at the Colonial Inn, Blackfoot. Alyce Sato, outgoing president, conducted the ceremony.

Idaho Falls city councilman Sam Sakaguchi was guest speaker, urging JACLers to take an active part in governmental affairs. Bob Endo was emcee. Kin Sato was dinner chairperson. Jerry Goodwin's five-year-old daughter Anacheri, accompanied by her sister, entertained.

Tsukamoto, who has been chairing the Minidoka Project, first served as chapter president in 1949-50. Instead of "ranting and raving" and declining the responsibility as chapter president, he told the dinner crowd how happy he was to accept and continue the friendship of all members, something he sincerely treasured, and would try to keep the chapter and the Pocatello JACL hall going.

## ● Salinas Valley

With over 200 people present, the Salinas Valley JACL installation dinner-dance held Jan. 28 at Spreckels Veteran Memorial Hall was acclaimed a success. Harry Kubo of Parlier, president of

Commercial & Industrial  
Air-conditioning & Refrigeration  
Contractor

**Sam J. Umemoto**  
Lic. #208863 C-20-38

**SAM REIBOW CO.**  
1506 W. Vernon Ave.  
Los Angeles 295-5204  
Experienced Since 1939



Largest Stock of Popular  
& Classic Japanese Records  
Magazines, Art Books, Gifts  
340 E. 1st St., Los Angeles  
(New Addition) 330 E. 1st St.  
S. Ueyama, Prop.

the Nisei Farmers League, was guest speaker. George Takahashi's band, "The Drifters", entertained with music with a Japanese beat.

Ben Miyaoka is the new president. His daughter Sherrill was picked a basketball homecoming princess at North Salinas High.

Senior citizen projects continue to meet at the Buddhist Church with several out-of-town trips on line for the spring-summer including picnic with other senior citizen groups in August and the chapter picnic Sept. 17.

## ● San Jose

The fourth annual San Jose JACL Duplicate bridge party will be held on Saturday, Mar. 18, 7:30 p.m. at the

## INDEPENDENCE INTERNATIONAL

Helping qualified people obtain a second income (\$300-900 month), financial independence. Write or call us for a personal interview.

**H. TOM SUECHIKA**  
8307 Keim St., Rosemead, Ca 91770  
(213) 571-0311

'Ask About Our Business Opportunity'



312 E. 1st St., Room 202  
Los Angeles, Calif.  
NEW OPENINGS DAILY  
624-2821

## Aloha Plumbing

LIC. #201875  
PARTS & SUPPLIES  
—Repairs Our Specialty—  
1948 S. Grand, Los Angeles  
Phone: 749-4371



One of the Largest Selections  
2421 W. Jefferson, L.A.  
731-2121  
JOHN TY SAITO & ASSOCIATES



15120 S. Western Ave.  
Gardena 324-6444, 321-2123

## Nisei Trading

Established 1936  
Appliances - TV - Furniture  
NEW ADDRESS:  
249 S. San Pedro St.  
Los Angeles, Calif. 90012  
Tel.: 624-6601



PHOTOMART  
Cameras & Photographic Supplies  
316 E. 2nd St., Los Angeles  
622-3968

## Empire Printing Co.

COMMERCIAL and SOCIAL PRINTING  
English and Japanese  
114 Weller St., Los Angeles 90012 628-7060

Wesley United Methodist Church with prizes being offered in three categories: majors, intermediates and social.

Players may come in pairs or partners will be provided. Entry fee of \$3 includes coffee and refreshments. On the committee are:

Sachi Miki, Diane Kawamura, Amy Higuchi, Helen Uchiyama, June Miyakusa, Grace Kawakami, Swannee McKay, and Aiko Nakahara.

Continued on Next Page



## Naomi's Dress Shop

Sport & Casual, Sizes 3-18  
116 N. San Pedro St.  
Los Angeles: 680-1553  
Open Tue.-Fri. 9:30-6:30 and Sat. 11-9. Closed Sun.-Mon.

## CHIYO'S

Japanese Bunka Needlecraft  
文化刺繍  
WHOLESALE - RETAIL  
Bunka Kits - Framing - Aoi Kimekomi Doll Kits  
Nippon Doll Kits - Mail Orders Welcome  
Lessons - Instructor's Certificate  
2943 W. Ball Rd.  
Anaheim, Calif. 92804  
(714) 995-2432  
Open Daily 10-5, Friday to 8  
Closed Sunday, Tuesday

## ED SATO

PLUMBING AND HEATING  
Remodel and Repairs  
Water Heaters, Garbage Disposals  
Furnaces  
Servicing Los Angeles  
293-7000 733-0557

## MARUKYO Kimono Store

New Otani Hotel & Garden-Arcade 11  
110 S. Los Angeles  
Los Angeles 628-4369

## Mikawaya

Sweet Shop  
244 E. 1st St.  
Los Angeles MA 8-4935

## 'Cherry Brand'

MUTUAL SUPPLY CO.  
1090 Sansome St.  
San Francisco, Calif.



318 East First Street  
Los Angeles, Calif. 90012  
626-5681

FRESNO, Calif.—Lots of music and dancing Saturday night will conclude the weeklong activities of Amerasia Week '78 being held on the CSU Fresno campus.

Sponsored by the Amerasia Club and Asian American Student Body, the event exhibited various activities and displays exemplifying the Asian experience in America and the heritage of the contemporary Asian American. Saturday's fare, which begins at 7:30 p.m., will feature:

## Fremont to add Japan Sister City

FREMONT, Calif.—The Fremont city council on Jan. 10 approved search for a Japanese Sister City at the behest of the local JACL, which is now coordinating efforts to determine the place. It is

Ken and the Comets, Filipino Dancers, Felix Julio (Phillip) Gotanda and koto players Lynn & Emy Kubota, the musical Dunn Family, Korean fan dancer Ae Kyong Grace and the S.F. "Bamboo."

Heading off the festivities in the College Union on Monday was the Los Angeles-based jazz-rock group Hiroshima. On Tuesday, Jerry Enomoto, California Director of Corrections addressed students. A youth symposium followed Wednesday, with the theatrical group East/West Players performing Thursday.

currently affiliated with Elizabeth, Australia, and Puerto Penasco, Mexico.

Fremont JACL president Walter Hashimoto said a number of prospective cities will be presented to the city council for approval. Coordinator Ron Nakayama was instrumental in securing support from various civic, school, business and cultural groups to find a Japanese sister city.

## Printer master exhibit

LOS ANGELES—An exhibition by Japanese print masters Shiko Munakata (1903-1975) and Masuo Ikeda (b. 1934) will be shown March 14 to July 16 in the Far Eastern Art Galleries at the County Museum of Art.



Jade is an attractive quality magazine that is solely devoted to the people of Asian extraction living in America. It is a national magazine that contains stimulating articles and outstanding photographs depicting the portion of the American society that contains a dual heritage; one that is old and traditional and conversely one that is new and ever challenging.

## ● INTRODUCTORY OFFER ●

We will promptly refund your subscription price if you decide Jade magazine does not meet your expectations.  
Please send me a subscription to Jade.  
Published ☐ 1 Year ☐ 2 Years ☐ 3 Years  
Quarterly \$5.00 \$9.00 \$13.00  
(Please enclose check)

Name \_\_\_\_\_  
Address \_\_\_\_\_ Apt. No. \_\_\_\_\_  
City \_\_\_\_\_ State \_\_\_\_\_ Zip \_\_\_\_\_

JADE, 3932 Wilshire Blvd., Suite 208  
Los Angeles, CA 90010



## MRS. FRIDAY'S Gourmet Breaded Shrimps and Fish Fillets

Fishing Processors, 1327 E. 15th St., Los Angeles (213) 746-1307



Fish Cake Manufacturer  
Los Angeles

## YAMASA KAMABOKO



Distributors: Yamasa Enterprises  
515 Stanford Ave.  
Los Angeles  
Phone: 626-2211

## GARDENA—AN ENJOYABLE JAPANESE COMMUNITY Poinsettia Gardens Motel Apts.

13921 S. Normandie Ave. Phone: 324-5883  
68 Units • Heated Pool • Air Conditioning • GE Kitchens • Television  
OWNED AND OPERATED BY KOBATA BROS.



## New directory

FRESNO, Calif.—Nikkei Service Center, sponsored by the Central California JACL District Council, is com-

piling a directory of those who have been surveyed in recent months by Yoshio Kai, Craig Sakaguchi and Donald Tsuruoka.

Money is like a sixth sense  
—and you can't make use of  
the other five without it.  
—Somerset Maugham

## Chapter People Handling Memberships

Membership fee shown after the name of the Chapter reflect the current rate for Single and Couple. Thousand Club members now contribute \$35 and up; their spouse (TC sp) may enroll at a special rate as shown, otherwise

the Single rate applies. Student (s) dues do not include PC subscription but such members may subscribe at the JACL rate of \$5 per year. Membership checks are payable to the JACL chapter of the individual's choice.

Report Late Changes to Pacific Citizen.

**Pacific Northwest**  
Columbia Basin (\$20-35, s\$7)  
Ed Yamamoto TC sp \$15  
4502 Fairchild Loop  
Moses Lake, Wash. 98837  
Gresham-Troutdale (\$12-15)  
Hawley Kato  
Rte 1, Box 187  
Gresham, Ore. 97030

**Mid-Columbia (\$15-26)**  
Ron Yamashita  
3790 Mountain View Dr.  
Hood River 97031

**Portland (\$15-27)**  
Nobi Azumano  
2802 SE Moreland Lane  
Portland, Ore. 97202

**Puyallup Valley (\$16-30)**  
Hanna Yoshida  
5402 Pacific Ave.  
Tacoma, Wash. 98408

**Seattle (\$18-31, s\$6)**  
John H. Matsumoto  
c/o 316 S. Maynard  
Seattle, Wa. 98104

**Spokane (\$15-25, s\$5)**  
Marcelline Terao  
378 E. 7th  
Spokane, Wash. 99202

**White River Valley (\$15-30)**  
Hiro Nakai  
917-40th Ave. South  
Auburn, Wash. 98002

**No. Calif.-W. Nev. Alameda (\$15-28)**  
Nancy Tajima  
1165 Sand Beach Pl.  
Alameda, Ca. 94501

**Berkeley (\$15-27, TC sp \$12, s\$8)**  
Terry Yamashita  
1107 Ordway St.  
Albany, Calif. 94706

**Contra Costa (\$16-28)**  
John Shinagawa  
3011 Phillips Court  
Richmond, Ca. 94806

**Cortez (\$15-29)**  
Lloyd Narita  
13626 W. Harding Rd.  
Turlock, Calif. 95380

**Diablo Valley (\$16-27, s\$5)**  
Mollie Fujioka  
1874 Meadow Ln.  
Walnut Creek 94595

**Eden Township (\$13-26)**  
Rev. David Kagiwada  
629 Via Manzanitas  
San Lorenzo, Calif. 94580

**Florian (\$13-26, s\$5)**  
Catherine Taketa  
1324-56th St.  
Sacramento, Calif. 95819

**Fremont (\$15-28)**  
Herb Izuno  
41966 Via San Gabriel  
Fremont, Calif. 94538

**French Camp (\$15-25)**  
Hiro Shimamoto  
690 W. Mathews Rd.  
French Camp, Calif. 95231

**Gilroy (\$15-30)**  
Ray Yamagishi  
777 Cumberland Dr.  
Gilroy, Calif. 95020

**Las Vegas (\$12-24)**  
Lillian Morizono  
2888 El Cajon  
Las Vegas, Nev. 89109

**Livingston (\$17-34)**  
Stanley Morimoto  
9527 W. Meadow Dr.  
Winton, Calif. 95388

**Lodi (\$14-28)**  
Taul Takao  
2115 W. Walnut St.  
Lodi, Calif. 95240

**Marin County (\$18-30)**  
Sam Shimomura  
19 Tilden Dr.  
Novato, Calif. 94947

**Marysville (\$14-28)**  
Ray Kyono  
1648 Melanie Lane  
Yuba City, Calif. 95991

**Monterey (\$20-35)**  
Pet Nakasako  
805 Lily St.  
Monterey, Calif. 93940

**Oakland (\$15-27)**  
Roy R. Endo  
614 Mandana Blvd.  
Oakland, Calif. 94610

**Placer County (\$15-28, s\$9)**  
Gary S. Imamoto  
P.O. Box 646  
Newcastle, Calif. 95658

As of Mar. 1, 1978

**Reno (\$13-25)**  
Kiks Wada  
2007 Branch Ln.  
Reno, Nev. 89509  
**Sacramento (\$15-20-29)**  
Percy T. Masaki  
2739 Riverside Blvd.  
Sacramento, Calif. 95818  
**Salinas Valley (\$15)**  
Henry Kuramoto  
P.O. Box 1963  
Salinas, Ca. 93902

**San Francisco (\$15-27)**  
Yo Hironaka  
56 Collins St.  
San Francisco 94118

**San Jose (\$16-24)**  
Rose Kinaga  
1576 Darlene Ave.  
San Jose, Calif. 95125

**San Mateo (\$15-30)**  
Grayce Kato  
1636 Celeste Dr.  
San Mateo, Calif. 94402

**Sequoia (\$17-32, ar. 15-28)**  
Adrian Itaya  
786 Sunshine Dr.  
Los Altos, Ca. 94022

**Sonoma Cty (\$17-30, s\$5)**  
Frank K. Oda  
1615 W. Third St.  
Santa Rosa, Calif. 95401

**Stockton (\$14-28, TC sp \$14)**  
James Tanji  
975 W. Mariposa Ave.  
Stockton, Calif. 95204

**Tri-Valley (\$15-27)**  
H. Kitajima  
185 Front St. #204  
Danville, Calif. 94526

**Watsonville (\$15-24)**  
Frank Tsuji  
3595 Vienna Dr.  
Aptos, Calif. 95003

**West Valley (\$15-27)**  
Jane Miyamoto  
2850 Mark Ave.  
Santa Clara, Calif. 95051

**Central California**  
**Clovis (\$15-28, s\$5)**  
Toshi Kawasaka  
2013 Arden Dr. W.  
Fresno, Calif. 93703

**Delano (\$13-26)**  
Jeff Fukawa  
714 Washington  
Delano, Calif. 93215

**Fowler (\$13-26)**  
Wilson Kawaguchi  
4331 E. Jefferson  
Fresno, Calif. 93725

**Fresno (\$14-26)**  
Tak Morita  
5162 N. Biola Ave.  
Fresno, Calif. 93727

**Parlier (\$13-25)**  
Tom Taketa  
14910 E. Adams  
Parlier, Calif. 93648

**Reedley (\$12-24)**  
Tim Kurumaji  
6612 S. Pedersen Ave.  
Reedley, Ca. 93654

**Sanger (\$15-27)**  
Tom Moriyama  
9594 E. American Ave.  
Del Rey, Calif. 93616

**Selma (\$13-26)**  
George Fukagawa  
11891 E. Elkhorn Ave.  
Kingsburg, Calif. 93631

**Tulare County (\$15-35)**  
Maude Ishida  
20220 Rd. 256  
Strathmore, Ca. 93267

**Pacific Southwest**  
**Arizona (\$14-27)**  
Mrs. Masa Takiguchi  
5702 W. Northern Ave.  
Glendale, Ariz. 85302

**Carson (\$12-24)**  
Nita Baird  
23207 S. Marigold Ave.  
Torrance, Calif. 90502

**Coachella Valley (\$15-30)**  
Sam Musashi  
43-712 Main  
Indio, Calif. 92201

**Downtown L.A. (\$18-29)**  
Joe Hazama  
c/o Mitsubishi Bank  
321 E. 2nd St.  
Los Angeles, Ca. 90012

**East L.A. (\$15-30)**  
Michi Ohi  
111 St. Albans Ave.  
So. Pasadena, Calif. 91030

**Gardena Valley (\$18-30)**  
Dudley Otake  
Gardena JACL  
P.O. Box 2361  
Gardena, Calif. 90247  
**Greater Pasadena (\$15-28)**  
Bob Uchida  
852 S. Los Robles  
Pasadena, Calif. 91106  
**Hollywood (\$18-30, s\$7.50)**  
Irene Koseki &  
Toshiko Ogita  
2017 Ames St.  
Los Angeles, Calif. 90027

**Imperial Valley (\$17-26)**  
Shiz Morita  
590 Euclid  
El Centro, Calif. 92243

**Long Beach Harbor (\$18-28)**  
Lloyd Inui  
187 Kallin  
Long Beach, Calif. 90815

**Metro L.A. (\$15-27)**  
Cynthia Lew  
405 N. Valencia St.  
Alhambra, Calif. 91801

**North San Diego**  
Hiro Honda  
1120 Chestnut Ave.  
Carlsbad, Calif. 92008

**Orange County (\$18-30)**  
Betty Oka  
13228 Ferndale Dr.  
Garden Grove 92644

**Pan Asian (\$18-30)**  
Chris Naito  
164 Grove  
Sierra Madre, Calif. 91024

**Pasadena (\$15-28)**  
Ruth Ishii  
515 Longwood Ln.  
Pasadena, Calif. 91103

**Progressive Westside**  
Toshiko Yoshida  
5156 Sunlight Pl.  
Los Angeles, Calif. 90016

**Riverside (\$13-26)**  
Doris Higa  
3688 Van Buren Blvd.  
Riverside, Ca. 92503

**San Diego (\$17-30)**  
Jack Matsueda  
461 Westby St.  
Chula Vista, Calif. 92011

**San Fernando Vly (\$18-28, s\$7.50, TC sp \$14)**  
Phil Shigekuni  
16915 Labrador St.  
Sepulveda, Calif. 91343

**San Gabriel Vly (\$18-28)**  
Fumi Kiyari  
1423 S. Sunset  
West Covina, Calif. 91790

**San Luis Obispo (\$14-28)**  
Geo. Ikenomiya  
1662 Crestview Cir.  
San Luis Obispo 93401

**Santa Barbara (\$15-28)**  
Reiko Uyesaka  
1236 E. De La Guerra St.  
Santa Barbara 93103

**Santa Maria (\$16-30)**  
Sam Iwamoto  
605 E. Chapel St.  
Santa Maria, Calif. 93454

**Selma (\$18-30)**  
James Seippel  
4063 Via Encinas  
Cypress, Calif. 90630

**South Bay (\$15-28)**  
Thomas Shigekuni  
400 Union Bank Tower  
Torrance, Calif. 90503

**Venice-Culver (\$18-28)**  
Irene Hoshikawa  
11822 Wagner St.  
Culver City, Ca. 90230

**Ventura County (\$18-29)**  
Yas Yasutake  
292 Walnut Dr.  
Oxnard, Calif. 93030

**West Los Angeles (\$15-28)**  
Steve Yagi  
3950 Berryman Ave.  
Los Angeles, Calif. 90066

**Wilshire (\$18-30)**  
Alice Nishikawa  
234 S. Oxford  
Los Angeles, Calif. 90004

## Intermountain

**Boise Valley (\$20-35)**  
Roy Oyama  
1515 Locust  
Caldwell, Ida. 83605

**Idaho Falls (\$13.50-27)**  
Martha Inouye  
P.O. Box 494  
Shelley, Ida. 83274

**Mt. Olympus (\$15-27)**  
Mary Takemori  
170 Pioneer St.  
Midvale, Utah 84047  
**Pocatello (\$15-30)**  
Marie Proctor  
1605 Monte Vista Dr.  
Pocatello, Ida. 83201  
**Salt Lake (\$15-27)**  
Mark I. Tsuyuki  
2754 Hartford St.  
Salt Lake City, Utah 84106  
**Snake River (\$15)**  
David Mizuta  
Rt 1, Box 147  
Ontario, Ore. 97914

**Wasatch Front North (\$14)**  
Stephen Oda  
824 N. Brookshire  
Kaysville, Utah 84037

## Mountain Plains

**Arkansas Valley (\$12-24)**  
Harry Shironaka  
Rt 1, Box 76  
Ordway, Colo. 81063

**Fort Lupton (\$15-30)**  
Tom Sasaki  
1812 Weld County Rd. 27  
Brighton, Colo. 80601

**Houston (\$17)**  
Harvey Onishi  
5118 Jackwood  
Houston, Tex. 77096

**Mid-Hi (\$15-30)**  
Kiyoto Futa  
1282 Brentwood  
Lakewood, Colo. 80215

**New Mexico (\$15-28)**  
Mary Matsubara  
7017-4th St. NW  
Albuquerque, NM 87107

**Omaha (\$15-30)**  
Mary Smith  
3006 Mason St.  
Omaha, Neb. 68105

**San Luis Valley (\$12-24)**  
Shirow Enomoto  
P.O. Box 750  
Alamosa, Colo. 81101

## Midwest

**Chicago (\$18-30)**  
Donna Ogura  
5414 N. Clark St.  
Chicago, Ill. 60640

**Cincinnati (\$15-28)**  
Jacqueline Vidourek  
3091 Riddle View #3  
Cincinnati, OH 45220

**Cleveland (\$13-26)**  
Mrs. Alice Nakao  
2510 Lincoln Ave.  
Parma, Ohio 44134

**Dayton (\$15-25)**  
Matilde Taguchi  
4100 W. Third St.  
Dayton, Ohio 45428

**Detroit (\$12.75-25.50)**  
Michiko Tagami  
15508 Rose Dr.  
Allen Park, Mich. 48101

**Hoosier (\$15-27.50)**  
Ken Matsumoto  
4240 Briarwood Dr.  
Indianapolis, Ind. 46250

**Milwaukee (\$12-18)**  
Julius Fujihira  
5856 S. 33rd Ct.  
Milwaukee, Wisc. 53221

**St. Louis (\$14-28)**  
Masao Abo  
12451 Glenmeade No. J  
Maryland Hts. Mo. 63043

**Twin Cities (\$15-28)**  
Tosh Abe  
9624 Vincent Rd.  
Bloomington, Mn. 55431

**Eastern**  
**New York (\$18-35)**  
Haruko Murakami  
697 West End Ave. #14D  
New York, NY 10025

**Philadelphia (\$15-25)**  
Reiko Gaspar  
540 S. Melville St  
Philadelphia 19143

**Seabrook (\$15-28, sr. \$10)**  
John (Terry) O'Neill  
25 Orilla Dr.  
Bridgeport, NJ 08302

**Washington D.C. (\$13-26)**  
Etsuko Y. Smith  
6208 Perthshire Ct.  
Bethesda, Md. 20034

## Hayakawa addresses Boise Lincoln Day fete

BY MARY FUJII HENSHALL  
(Special to the Pacific Citizen)

BOISE, Idaho—Senator S.I. Hayakawa was keynote speaker at the 66th annual Lincoln Day Banquet in Boise, Feb. 15 at Convention Center of the Rodeway Inn before a crowd of more than 1,100. He was introduced by Sen. Jim McClure (R-Idaho).

Hayakawa's talk was not a fire-breathing political speech about why the Democrats should be stomped and defeated. Sounding more like a good-humored university professor, he kept his

audience rocking with applause and laughter at his wry witicism. He compared, tongue in cheek, the two political parties.

"If a person were drowning 100 feet from shore," he said, "a Republican would throw him a 25-foot rope and tell him to swim the rest of the way because it was good for his character. A Democrat would throw him a 100-foot rope, then walk away to do another good deed."

Both parties represent all kinds of people, he stated. Each party borrows from

the other, stealing ideas from one another with the greatest abandon.

On a serious note, he said, "We need to understand and cherish the political process. We must not forget that, as we deal in politics, we are dealing with the very essence of civilization. We should all be proud to be able to take part in it."

Among the distinguished Americans who have in the past addressed Boise's Lincoln Day Banquets were:

Sen. Everett Dirksen, Illinois;

Continued on Back Page

## \$25,000 GOAL:

## Okubo-Yamada Fund: at 19% now

SAN FRANCISCO — To fulfill a National JACL commitment to the families of Evelyn Okubo and the Ranko Carol Yamada, a goal of \$25,000 has been set, according to George Baba and Frank Oda, co-chairmen of released by National JACL Headquarters shows \$4,782.55 (19%) has been received.

A total of 39 chapters have contributed out of the 105 chapters now in the National JACL. The NC-WN District has contributed \$100. Breakdown by chapters reveals that Stockton heads the list with \$1,532 followed by Sacramento with \$625, Sonoma County with \$253. Other contributors with chapter affiliation indicated are:

San Francisco \$225; Chicago \$200; Seattle \$172.55; Washington D.C. and Lodi, each \$170; French Camp \$165; Sequoia \$110; Gardena Valley and Tulare County \$105; and Puyallup Valley \$100.

Other donations from 27

**Prison guard stabbed**  
NEW WESTMINSTER, B.C. — A Japanese Canadian guard at the British Columbia Penitentiary, Roy Yasuda, 32, was stabbed twice in the throat and body during an unsuccessful escape bid by five prisoners Jan. 28. He was the only casualty.

## chapter pulse

Continued from Previous Page

Results of the 1977 Tournament held in May are as follows:

Majors: Toshiko Yingst and Charles Mok; Sachi Miki and Dr. George Hiura; Dr. and Mrs. Tom Higura.

Intermediates: N/S, Kay Kawahara and Ruth Sakai; Helyn Uchiyama and Harry Yoshida; Dr. Wright Kawakami and Tochi Kogura. E/W, Dr. Ray Uchiyama and Tom Yagi; tie for 2nd and 3rd; Mary Kawakami and Eiko Shimizu, and June Miyakusu and Sam Takaichi.

Social: N/S, Dr. and Mrs. Jim Higuchi; Mr. and Mrs. Henry Gosho; 3, Ada Uyeda and Miyako Taketa. E/W, Mr. and Mrs. George Masunaga; Barbara Takaichi and Jane Asanuma; Dr. Tak Inouye and Diane Kawamura.

## Santa Barbara

Installation for the 1978 Santa Barbara JACL took place Feb. 4 at the Montecito Country Club. Mike Hide was re-elected to serve another term as chairman. Tom Hirashima was master of ceremonies. Santa Barbara Mayor David Shiffman was the installing officer. The Rev. Dan Hodgeson of Bethany Congregational Church pronounced the invocation while the Rev. S. Sakow of the Buddhist Church gave the benediction.

Guest speaker Gregory

chapters ranged from \$10 to \$60. They include:

Berkeley, Cleveland, Alameda, Arkansas, Boise Valley, Contra Costa, Cortez, Fresno, Livingston-Merced, Mile-High, Mt. Olympus, New York, Omaha, Orange County, Pasadena, Philadelphia, Portland, Riverside, Salt Lake, San Benito, San

## Artist named for Little Tokyo area

LOS ANGELES—Richard Yokomi, a Chouinard Art Institute graduate, was appointed a CETA artist and will be engaged in art works in the public areas of Little Tokyo for the next eight months, according to Friends of Little Tokyo Arts.

Possibilities of silk screening photographs from Toyo Miyatake's files of Little Tokyo on ceramic tile to decorate the new Bunmei-do Bldg. upper floor wall were also revealed at the last FOLTA meeting.

## Veterans Affairs

SACRAMENTO, Calif.—Assemblyman Paul T. Bannai (R-Gardena), has been appointed to the newly formed Select Committee on Veterans Affairs to investigate allegations that rehabilitation and educational benefits of veterans have been neglected since 1966.

Schaaf of UC Santa Barbara related his fascinating research of Col. George Morgan, an Indian agent during the colonial period and early days of the Republic. The papers he is now studying belong to Mrs. Susannah Morgan, local Montecito resident.

Young pianist Bernadette David played several classical pieces during intermission. She was introduced by George Ohashi. Mrs. Ikey Kakimoto made the orchid corsages for the ladies. Harold Lee was in charge of printing the program.

## St. Louis

St. Louis JACL honored Sam Migita, who celebrates his 100th birthday on Mar. 4, at the 1978 chapter inaugural dinner held Jan. 21 at Sheraton Westport. A birthday card signed by nearly 80 dinner guests, wires of congratulations and a scroll from the chapter were presented to the centenarian. Other presentations included recognition of Misa Izumi, who has served as the chapter Sunshine Chairman for many years, and of Linda Peterson and Linda Ishibashi, JAYs advisers.

Lee Durham is the 1978 chapter president. Dr. George Uchiyama emceed the dinner. Main speaker,

Gabriel Valley, San Jose, San Mateo, Snake River Valley, Twin Cities, Venice-Culver and Watonville.

An amount of \$45 with no chapter designations was also received.

While it had been hoped to conclude this fund raising early this year, due to the slow response, the fund drive has been extended until July.

Meanwhile, Baba and Oda appealed to all district governors and chapter presidents to appoint a chairman for this drive with name and address reported to National.

## San Franciscans welcome Amau

SAN FRANCISCO—The local Nikkei community including the JACL welcomed Tamio Amau, new Japanese consul general, at dinner Jan. 31. (Herb Caen said Amau "has roots deeper than most San Franciscans.") His great-grandfather Kentaro Yamagiya was the first Japanese consul in San Francisco, 1876-1882, while his great uncle Matsuzo Nagai was consul general here, 1909-1913.)

Dr. Sueng Kim, professor of business at St. Louis University, pointed to the need of a strong JACL in view of the regressive economic situation between the United States and Japan.

"The trade imbalance worsens and there becomes a good possibility of discrimination against all Asians," Durham commented afterward in the chapter newsletter. "It is only through union and constructive activities that the threat of discrimination can be kept at a minimum."

## West Los Angeles

Calendar of events for the West Los Angeles JACL and Women's Auxiliary was published in the February newsletter. Immediate attraction is the reception at Yamato Restaurant at Century Plaza Hotel this Sunday, Mar. 5, 2-4 p.m., for the new East West Flavors II cookbook followed by the annual wine-tasting benefit party April 16, 12:30-3:30 p.m. at the same locale. Other events include:

May 7—Chapter queen's tea; June 4—PSW Nisei Relays at West L.A. College; June 11—Barbecue



# Strictly For and About

## NORTHERN CALIFORNIA-WESTERN NEVADA DISTRICT COUNCIL

### Cut costs, boost info output

By CHUCK KUBOKAWA  
Palo Alto, Calif.

The **PURPOSE** of this new feature is to disseminate the NC-WNDC News in an economical way to our district council members, and at the same time share our DC News with the rest of the National JACL Organization. Its scope will be to report on the proceedings of each of our quarterly council meetings and NC-WNDC activities of interest to all Nikkei.

The **RATIONALE** behind this effort is to improve communications between the districts, local chapters, and our entire national organization, and to provide a platform for unifying our JACL Organization in an economical manner. Shared useful ideas will help to optimize our national organization operations and create intra-district unity and understanding.

A **NEW START.** At one time our DC established an excellent newsletter edited by Marge Yamamoto, which was distributed to executive board members of all our NC-WNDC Chapters and the DC Executive Board.

As in any communication link if the information is not passed on the method is very ineffective and the message is limited to the privileged few. In order to remedy such a situation and cut costs, the NC-WNDC Council supported our idea of using the Pacific Citizen, as the communication link for our DC through this new feature.

A **POINT OF CLARIFICATION.** I have been asked by several persons why our DC meeting was scheduled for such a distant location as Las Vegas, Nevada? There are many reasons why we had our meeting there. The most important one is that the Las Vegas Chapter is in our DC and was scheduled for this quarterly meeting.

Historically, our DC quarterly meetings have been sponsored repeatedly by five or six active chapters and periodically by two or three other chapters. With a DC of 32 chapters, I felt all chapters should take an active role and responsibility in the activities of the DC. I therefore suggested an equitable rotational schedule for the DC meetings, where each chapter would take charge of a DC meeting once every eight years. This suggestion was unanimously accepted by our DC and was put into effect late last year.

We have chapters that have never sponsored a DC meeting and chapters that have only attended one or two DC meetings in the last two years. Before the next two years are over, we will have had every chapter in our district at one time or another sponsor a DC meeting. In this manner everyone gets into the act and will play an active role in our organi-

zation. We shouldn't expect the very active chapters to always be burdened with repeated responsibilities belonging to those who are not taking an active role in the DC activities or our national organization. A strong organization requires that everyone take an active or supportive role and share the responsibility of the group. In such a manner each chapter will develop the necessary expertise of conducting-hosting meetings and be abreast of what's taking place in the JACL Organization and in the DC.

Listed below is the schedule of meetings for the next eight years (Subject to sectional seasonal adjustments):

1978—Las Vegas, San Benito, West Valley, Florin.  
1979—Gilroy, Watsonville, Tri-Valley, Cortez.  
1980—Livingston-Merced, Placer, Lodi, San Mateo.  
1981—Oakland, Fremont, Diablo Valley, Monterey Peninsula.  
1982—Eden Township, French Camp, Marysville, Alameda.  
1983—Contra Costa County, Sonoma County, Marin County, Salinas Valley.  
1984—Stockton, Reno, Berkeley, San Jose.  
1985—San Francisco, Sequoia, Sacramento (Yolo County or Fairfield).

Any comments to further improve this schedule will be gladly accepted.

Our first 1978 quarterly DC meeting was hosted by the Las Vegas Chapter. (Yes! There are many permanent Nikkei residents in Las Vegas, Nev.) The chapter members did a splendid job of taking care of everything for the delegates.

Thanks to Ruby Eaves, who started preparing everything for the meeting last year, new president William Endo for helping direct his new board to lead the delegates in the right direction (to the "greening" of Nevada) and providing the necessary administrative help; Ms. Lillian Morizono for seeing us off on Sunday, and making sure we didn't leave any personal effects behind and had enough money to get to the airport.

The receptiveness of the Las Vegas Chapter was super... and our special thanks to our man in Nevada, Wilson Makabe who was able to arrange for our luncheon speaker, Harry Reid, head of the Nevada State Gaming Commission.

As **Usual** our agenda was without any spare time, a tight fit till 5 p.m. Two items were tabled until our next meeting in San Benito (Hollister). Both items are of great importance to the entire JACL Organization.

1—Health Plan: Blue Cross, Bud Nakano; Blue Shield, John Yasumoto.  
2—Proportional Voting: San Mateo & Sequoia Chapters (Constitutional Amendment).

All NC-WNDC Chapters will be responsible for providing a response to item 2 at the next DC meeting. Item 2

was assigned as an "Action Item". All amendments submitted with reference to item 2 will be mailed to all DC presidents and official delegates for review and comment (R/C). Members wanting to know about these items or desiring to make inputs should personally contact their presidents or official delegates.

A **Reminder.** Remember, you don't have to sit on your chapter board to make input to your chapter. Your voice can be heard through any board member, or by attending our chapter board meeting and speaking out. Matter of fact, please attend our DC meetings as a booster!!

Meanwhile, Back at the **Aladdin Hotel**, a whole array of subjects listed below were discussed and acted upon.

+Resolutions by the Central Cal DC: (1) Proxy voting, convention date selection and expense; (2) Bakke Case reconsideration by National.

+Disbanding of the Bay Area Chapter. Encouraging Bay Area Chapter Members to join their local area chapters. We need their constructive input.

+Project "Scatter". Not dead, it's alive and books are being distributed to Congresspersons, and pictures are being taken during the distribution. (Latest from Diablo Valley.) Books can be purchased at a discount when purchased in quantities of 5 or more. Forms available at National Headquarters.

+Encouraged Joint Activities for Chapter Liaison: to promote neighboring chapters; coalitions towards DC and National JACL organizational unity; encourage intra-chapter functions.

+1978 DC Budget.

+Formation of the "CAD" Team (Committee for Anti Discrimination): Chairperson, Floyd Shimomura, Ozzie Imai, John Tateishi, George Kondo, Kiyoshi Kawasaki...

+Reparation report.

+Governor's report.

+Japan American Friendship Act Report.

+Biennial Convention news and preparation by Shake Ushio of Salt Lake City.

Visitors: Provisional Assistant Director Miles Hamada, President James Murakami, National Legal Counsel Frank Iwama.

**Of National Importance and Note.** So far four very capable individuals from our DC have thrown in their impressive expertise and JACL experience into the national JACL Candidates ring:

For President—Clifford Uyeda, MD (retired). JACLer of the Biennium, 1975-76; National Committee Chairperson, Iva Toguri, Whale Issue, and Reparation.

For Vice President (Membership)—Steve Nakashima. DC vice governor 1977-78; DC legal counsel; National Convention parliamentarian.

For Vice President (Public Affairs)—Floyd Shimomura. DC secretary, 1977-78; Nat'l Committee Chairman, Committee Against Defamation, President, Sacramento JACL 1976-77.

For Treasurer—Eddie Moriguchi (incumbent). DC executive; president, San Francisco JACL, 1964-65. Accountant, CPA.

With their past activities, experience and record, these candidates are more than qualified and will, without a doubt, do a commendable job toward unifying our national organization when elected to office.

**SEED FOR THOUGHT:** When I visited with the Washington, DC, JACLers (Pat Okura, Ray Murakami, Dave

Nikaido, Mike Masaoka, Kaz Oshiki, New Yorker-Joji Konoshima), I was very impressed by their thrust to encourage their DC youth into becoming aware of our National JACL organization. They sponsored a two-day workshop-seminar for (high school seniors, college students) preparing them for the job market. Nikkei experts on personnel matters and professionals in various fields instructed the youths on how to write effective resumes and how to respond at personal interviews. The seminars handled by the senior JACL members helped the youths, and was found to be very successful.

So impressed was I, that I have asked our DC Youth Commissioner, Ich Nishida, to arrange for the same type of seminar.

At the Watsonville Chapter installation I was impressed to find out from the incoming president, Paul Hiura, that their chapter provides a seat on their chapter board for an Issei, so

### NC-WNDC proposes separate corp. manage JACL reparation campaign

LAS VEGAS, Nev.—Stepping up the JACL's program for Evacuation reparation with the appointment of a full-time director and staff and the start of a fund drive to finance this project was urged at a Northern California-Western Nevada JACL District Council session here Feb. 11.

Representatives of 20 of 31 member chapters attended this first quarterly 1978 session, despite the great distance delegates were asked to travel for the event.

John Tateishi of Marin County, district reparation co-chairman, who reported on the proposal also called for the formation of a Japanese American Claims Corporation.

The delegates passed a resolution calling for a full-time director and a fund-raising campaign.

Raising the chapter dues to the district council from its present 25 cents per member to 50 cents because of inflation and to finance new programs was proposed.

It was pointed out that individual dues in the Pacific Southwest District Council was \$2 per member and it was \$3 per member in the Midwest District Council.

Chapters were asked to discuss this change for possible action at the next meeting.

Possibility of an appointment of a Japanese American to the Japan-U.S. friendship commission as advocated by the JACL was recently discussed with the chairman of the commission in Washington, D.C., according to Charles "Chuck" Kubokawa of Palo Alto.

Kubokawa, NCWN district governor, who presided over the meeting, reported that he and Karl Nobuyuki,

the Issei perspective and wisdom can be shared at all the chapter meetings. Our DC Chapters should consider the same type of position for our elders, if there happens to be a sizeable population of elder Nikkei in the chapter locale.

**THE DISTRICT will next meet** in Hollister, where the San Benito Chapter will host the council. We want to show the Hollister community that our civil rights organization of over 31,000 members fully supports the San Benito Chapter and President, Kiyoshi Kawasaki, for the stand they took against the racist high school history teacher. The DC meeting date is **Sunday, May 7**. So keep that date open and come as a booster, official delegate, new president, or an inquisitive JACLer.

A **QUESTION.** How do we as Nikkei feel about articles that are coming out in national magazines like Fortune? See the Feb. 27, 1978 issue, page 74. "The Japanese Spies in Silicon Valley" (Semiconductor-Samurai - "tigers").

**ITEMS OF INTEREST.** U.S. steel industry, William F. Rockwell, Chairman of

the board, Rockwell International Corp., Pittsburgh, told Iron-Casting Society that Japan's advanced plant technology allows use of 30% less coking coal per ton of steel than produced in the U.S. mills. Crude steel production by highly efficient basic oxygen furnaces accounted for 82% of total Japanese steel production in 1975 vs 61.6% for the U.S.

Production by outmoded open-hearth furnaces in Japan was only 1% of its crude steel production in 1975, compared with 19% in the U.S.

Between 1971-76 annual production of steel per Japanese worker was 479 net tons compared with only 239 net tons for the U.S. steelworker. From 1960 to 1973, U.S. capital investment was 13.6% of Gross National Product, compared with 29% for Japan. During this period, the U.S. increased output per man hour (productivity) 2%, compared with Japan's 9.5%.

**REQUESTS:** If anyone wants the itemized notes of our DC meeting, write to:

George Kondo, reg. dir., NC-WNDC Office, 1765 Sutter St., San Francisco, Ca 94115

JACL executive director, visited the nation's capital (over the Jan. 28 weekend) and also discussed this matter with senators and congressmen.

Dr. Clifford I. Uyeda of San Francisco will be the district's candidate for national president at the JACL national convention this July in Salt Lake City.

Also being supported for re-election is Eddie Moriguchi of San Francisco for national treasurer.

Two others are being nominated as vice presidents, Stephen Nakashima of West Valley chapter for membership and Floyd Shimomura of Sacramento for public affairs.

Frank Iwama of Sacramento, JACL national legal counsel, reported that chances for a settlement in the Okubo-Yamada suit against the Hilton hotel chain are now considered good.

The decision of the Illinois appellate court reversing the previous unfavorable decision against the two Stockton families who sought damages in the 1972 Palmer House murder and assault case and sending it back to the trial court was considered highly encouraging, Iwama said.

However, he urged further contributions be sent to the JACL's Okubo-Yamada legal expense fund and said checks should mention JACL to make the donations tax deductible.

Kubokawa also reported that he had been officially notified that the Bay Area Community chapter was being dissolved. The total number of chapters in the district will soon be up to 32 again with a new unit being organized in Solano county.

All chapters were invited to send delegates to the 25th

biennial JACL national convention which will be held in Salt Lake City from Tuesday, July 18 through Saturday, July 22 by Shigeki "Shake" Ushio, co-chairman for the event.

Current plans are for all business meetings to be held in the morning with many special events during the rest of the time.

A special pre-convention NCWN District Council meeting will be held Sunday, June 4 in San Francisco, it was also announced by Kubokawa.

The district's second quarterly meeting will be held in May with the San Benito chapter as hosts and it was announced that West Valley will be the hosts of the third quarterly meeting in August.

Florin JACL had previously been designated as hosts for the final 1978 meeting in November.

Formation of a district committee against defamation was also announced with Shimomura as chairman.

Wallace Terui of Fremont and Dr. Tom Taketa of San Jose were named by Kubokawa as chairman for the annual district chapter of the year competition.

It was also reported that the JACL National Board will be meeting at the Mas Satow Bldg. in San Francisco over the Mar. 10-12 weekend.

—Nichi Bei Times

**Irene's**  
Japanese Bunka Embroidery  
• Complete line of kits  
• Mail orders welcomed  
• Lessons by mail  
425 First Street  
Los Altos, Calif. 94022  
(415) 941-2777  
(located on San Francisco Peninsula)  
Irene Kono, Certified Instructor



## CONVENTION CORNER

## Double-Fault is a Four-Letter Word

By ART MIYAZAKI

Salt Lake City

Rummaging through corners that hadn't seen daylight since Laver beat Newcombe, you scrounge amongst the rubble you had two summers ago, but despite these major obstacles, you find what you've been looking for ...

Broken string there, loose grip here—no major thing. Nothing that can't be fixed with a quick trip to the sport

Arthur M Miyazaki is the tennis tournament director for the 1978 National JACL Convention.

shop. Finally, with your new Keds, a pair of ugly checkered bermuda shorts and your favorite work shirt on you venture forth to conquer worlds where Borg, Connors and Vilas reign.

Once you've refound that wicked forehead that decimated your little sister, who vowed revenge and a rematch once the cast came off her leg, you decide your tournament touch and go about looking for that match you might have a chance of winning. I have a place to go!

Some of the competition will be tough and some will

be easy. It all depends on which bracket you enter. You need not worry for there is a division for everyone.

What am I talking about? It's the tennis tournament being held in conjunction with the National JACL Convention in Salt Lake City. The first day of play is July 17, which is just before the start of the General meetings. For those who wish some extra practice time the tournament director will help arrange to find courts to hit on. So plan to come early and get ready. Wimbledon is a service ace away. □

## Seattle Japanese Hall being remodeled

TOKYO—"Having worked in Seattle for more than 10 years, many people there are backing my efforts to reconstruct the Nippon-kan Hall in that city. However, I have found it difficult to obtain monetary contributions from them for financing the project," said Prof. Richard McKinnon.

The 55-year-old professor at the Univ. of Washington,

## JACCC head says \$2,000,000 raised

LOS ANGELES—Grand total raised to date is over \$2,000,000 for the Japanese American Cultural and Community Center, it was announced by president George Doizaki after three more state-chartered Japanese banks together pledged \$15,000.

First payment of \$5,000 was forwarded by Tatsumi Iwata of Japan California Bank, Arata Itoh of Mitsui Bank of California, and Tsuneo Fujita of Sanwa Bank of California.

Other banks have been generous as well, Doizaki noted. Tokai Bank of California recently donated \$10,000; Mitsubishi Bank of California completed its \$10,000; while California First Bank and the Sumitomo Bank of California raised their pledges to \$25,000 each. □

who came to Japan to lecture at the Arts Department of Nihon University, has been busy in raising money for the reconstruction here. He has set the target at about ¥50,000,000.

The Nippon-kan Hall was built in 1909 by Japanese residents in Seattle as a place where various cultural aspects of their native land could be presented, since many Japanese lived there at that time.

In prewar years, many Kabuki troupes from Japan staged performances at the hall, and Japanese opera singers, Tamaki Miura and Yoshie Fujiwara also sang there.

During the war, the cultural activities by Japanese Americans in the city died out, and the hall has remained unused ever since.

Eight years ago, the Nippon-kan Hall was bought by a Seattle architect. But because of its old age, the hall is on the verge of collapse. Hence, Prof. McKinnon, in consultation with the new owner, decided to reconstruct the hall, with the work scheduled to start this year.

Jr. Miss pageant MOSCOW, Idaho—Jacque Tominaga of Snake River High School, Blackfoot, was chosen third runner-up in the state Junior Miss Pageant held here recently.

## JACL Chapter-Sponsored Insurance

Endorsed by Pacific Southwest District Council

## New and Improved Group Medical Insurance, Includes Life Insurance for JACL Members

CONTACT LISTED BROKERS BELOW

## LOS ANGELES

Funakoshi Ins Agt ..... 626-5275     Art S Nishisaka ..... 731-0758  
Edward Matsuda ..... 295-4690     Tsuneishi Ins Agt ..... 628-1365  
Saburo Shimada ..... 933-5568     Yamato Ins Svc ..... 624-9516  
Kamiya Ins Agt ..... 626-8135

## ORANGE COUNTY

Ken Ige ..... 943-3354     Mack Miyazaki ..... 963-5021  
James Seippel ..... 527-5947     Ken Uyesugi ..... 540-3770

## MONTEREY PARK

Ogino Ins Agt ..... 685-3144     George I Yamate ..... 386-1600  
Dennis Kunisaki ..... 381-3774     Takuo Endo ..... 283-0337

## GARDENA VALLEY

Jeff K Ogata ..... 329-8542     Sugino-Mamiya Ins ..... 538-5808  
Stuart Tsujimoto ..... 772-6529     George J Ono ..... 324-4811

## WEST LOS ANGELES

Arnold T Maeda ..... 398-5157     Steve Nakaji ..... 391-5931

DOWNEY—Ken Uyetake ..... 773-2853

SAN FERNANDO VALLEY—Hiroshi Shimizu ..... 463-4161

PASADENA—Toshio Kumamoto ..... 793-7195

\*AN DIEGO—Ben Honda ..... 277-8082

## Census Bureau post in L.A. offered

LOS ANGELES — The regional U.S. Census Bureau is seeking a community services specialist to work in the central city area (\$9,959 and up) from April. Filing deadline is Mar. 15. For details, write to C. Michael Long, regional director, Bureau of the Census, 11777 San Vicente Blvd., Los Angeles 90049. □

## Buffet dinner set for Bob Matsui

LOS ANGELES—Sacramento Councilman Robert T. Matsui, candidate for the Congress from the Third District, will be honored at a bipartisan buffet dinner at the International Club of the World Trade Center on Friday, March 10, 6 p.m., according to France Yokoyama, chairman.

Tickets are \$5 per person. For reservations, call:

France Yokoyama, 662-4954; Kats Kunitzugu, 628-2725; Betty Yumori, 272-3151 ext. 306; Soichi Fukui, 626-0441; or Ed Kakita, 485-1080. □

## Dance classes set

SAN FRANCISCO — The Asian American Dance Collective is offering a full slate of classes, including a Brazilian Caribbean class currently being taught by Adela Chu Monday nights at 8:30. Other sessions to be held are: beginning afro jazz, Michele Wong, Tuesdays at 6:30 p.m. from March 14-May 9; intermediate afro jazz, Wong, Fridays at 6 p.m.; and beginning modern jazz, Bessie Mar, Wednesday at 7:30 p.m. from March 1 to April 5. For more information, write AADC, 1230 Grant Ave., San Francisco 94133 or call 552-0467.

## 442 dance benefit scheduled March 25

LOS ANGELES—The 442nd Veterans Assn. will host a spring dance Mar. 25 at Culver City Veterans Memorial Auditorium to raise funds to help remodel its 442nd Memorial Hall and to veterans hospitals and Keiro Nursing Home.

Robert Morris' 15-piece "Summer of '42" band will

## Asian American films scheduled

SAN FRANCISCO — A collection of new and vintage films with an Asian American slant will be shown at Intersection, 756 Union, on two succeeding Mondays, Mar. 6 and 13, at 8 p.m.

The Hollywood stereotype with playwright Frank Chin as guest speaker is the theme of the first night. The modern consciousness of Asian Americans will be shown the second week, leading with "Wendy ... Uh ... What's Her Name" produced by Christopher Chow in 1976. □

play, according to dance chairman Ken Yamaki (292-3071). Tickets at \$7 per person may be secured from:

Mike Takamine 822-6088; Lloyd Seki 935-3027; Chick Furuya 299-7070; Buddy Mamiya 323-0364; Dick Shinto 721-8141; Monte Fujita 684-0012; and Dr Richard Kumashiro (714) 846-1459.

## 'Soul Shall Dance' returns on stage

LOS ANGELES — Wakako Yamauchi's highly-acclaimed "And the Soul Shall Dance" will be presented as a special production of the East West Players March 17.

Recently shown on KCET's Hollywood Television Theater and recipient of four Critic Circle nominations, this new production will again be directed by Mako and Alberto Isaac. Cast includes:

Susan Inouye, Jim Ishida, Mimosa Iwamatsu, Pat Li, J. Maseras Pepito and Yuki Shimoda. □

## WAO dinner-dance

LOS ANGELES—We Are One's 10th annual installation dinner-dance will be held at Sheraton-Airport Hotel on Mar. 18.

## ATTENTION

## Central California JACL Members

To meet today's rising health care costs

APPLY NOW

for Major Medical Protection

BEFORE YOU PAY FOR YOUR CURRENT MEDICAL COVERAGE, CHECK OUR LIBERAL BENEFITS AND LOW RATES.

Maximum Limit ..... \$300,000.00  
Maximum Room Rate ..... \$80 per day  
Co-Insurance ..... 80/20  
Deductible ..... \$50 per claim

## QUARTERLY RATES

Male member ..... 43.20     Member plus 1 ..... 91.80  
Female member ..... 54.00     Family ..... 118.80

APPROVED and RECOMMENDED by the

JACL Central California District Council

Capitol Life's Major Med Health Plan has been in effect in Central California continuously for over TWELVE YEARS. The plan has been working smoothly and efficiently. Claim service has been FAST and FAIR, with NO DELAY or RED TAPE.

Written and serviced by your own fellow members and Community leaders who are genuinely interested in your personal welfare.

WE URGE YOU TO CALL NOW

Hiro Kusakai, Fresno ..... (209) 485-3674  
Taro "Kat" Katagiri, Fresno ..... (209) 485-3674  
Kaz Komoto, Sanger ..... (209) 875-3705  
Tom Shimasaki, Lindsay ..... (209) 562-2166  
John Niizawa, Fresno ..... (209) 255-8229  
Ed Yano, Reedley ..... (209) 638-4533  
Yoichi Katayama, Parlier ..... (209) 875-5689

Underwritten by Capitol Life Insurance Co., Denver, Colo.

ADMINISTERED BY

Chinn-Edwards Insurance Agency  
2811 Wilshire Blvd., Suite 770

Santa Monica, Calif. 90403

(213) 829-4727

Finest Japanese Cuisine - Open Daily  
Tatami Room     Cocktails

 Restaurant  
**EIGIKU**

314 East First Street, Los Angeles • (213) 629-3029

## DENTAL INSURANCE

DENTIST OF YOUR CHOICE

Anywhere in California

Benefits paid at 80%

Diagnostic & preventative - no deductible  
Restorative, oral surgery - \$50 deductible  
Prosthetics at 50% - \$50 deductible  
Maximum allowance - \$1,000 per year

## CANCER INSURANCE

California Only

Do you know the 7 CANCER WARNING SIGNALS?

Send for free brochure with information on CANCER facts and insurance that helps pay for the high cost of medical care. Benefits paid regardless of other insurance.

NO AGE LIMIT     NO PHYSICAL EXAMINATION  
PREMIUMS ARE LOW! LOW! LOW

For brochure call: Ben T. Tsuchimoto  
(415) 752-7392

Or Mail Coupon To:

642 - 19th Ave., San Francisco, CA 94121

Cancer \_\_\_\_\_ Dental \_\_\_\_\_  
Name \_\_\_\_\_  
Address \_\_\_\_\_  
Zip \_\_\_\_\_  
Phone Area Code \_\_\_\_\_



Continued from Page 3

selected Hawaii's Teacher of the Year for 1978) and now becomes eligible for the 1979 National Teacher of the Year. An active participant in student affairs, she organized a student council and helped students write a constitution and student handbook.

Sen. Daniel Inouye received a standing ovation after telling 600 delegates at the 20th annual convention of the state Association of Hawaiian Civic Clubs that teaching Hawaiian history in public schools is more important than the issues of Kahoolawe or reparation. "You must convince the young Hawaiian that he was not born a failure," he said. "That's very important." The senator blamed both Republicans and Democrats for the failure in teaching history and culture to young Hawaiians. For more than 20 years, he said, politicians have used the "lame" excuse of lacking funds and teaching to provide courses.

#### Government

Because he disagrees with Gov. George Ariyoshi's support of the death penalty for certain crimes, deputy director Masaru Oshiro of the State's Dept. of Social Services and Housing resigned Jan. 31 to openly oppose reinstatement of the death penalty in Hawaii. The Honolulu Advertiser, in its Feb. 1 editorial, said it was "a sad commentary on our times and our society when a respected public official feels compelled to resign to oppose reinstatement of the death penalty." Hawaii has been

without the death penalty since 1957.

David Takashima was appointed by Assemblyman Floyd Mori as associate consultant to the Joint Committee to Oversee Agriculture Labor Relations Board in Sacramento, chaired by the Pleasanton Democrat. Last fall, the onetime JACL youth intern of San Diego had been the Assemblyman's legislative intern. Robert Nakamoto was commended at the Tenth National Conference on Information Systems held in Phoenix. An acting assistant director of information systems, Health Care Financing Administration, HEW, he was recognized for 10 years of outstanding leadership in developing public welfare management information systems. One of the few Nikkei serving in the U.S. Coast Guard is Brett Watanabe, 27, son of Mr. and Mrs. Taul Watanabe of Bellevue, Wash. Watanabe is a graduate of Willamette University in Salem, Oregon and is currently serving in his third assignment in the Coast Guard Commandant Division, Washington D.C. The four-year veteran previously served in the 13th CG District in Seattle and aboard the "White Fish", a 133-foot buoy tender in Astoria, Ore.

#### Honors

Katsumi Tokunaga of San Jose, a Golden Gate agency manager of Franklin Life Insurance Co., has been awarded an unprecedented third consecutive "Man of the Year" award by the company. His 1977 personal production led all company agents in the state again as well as in the western U.S. region. He was given a 35-year

service pin and an engraved pen set. Nanka Hiroshima Kenjin-kai awarded five scholarships to recent high school graduates. They are: Jane Nakamoto, daughter of Mr. and Mrs. Kenichi Nakamoto of San Gabriel; Herbert Yamano, son of Mr. and Mrs. Masaharu Yamano of Corona; John Yamano, son of Mr. and Mrs. John Yamano of Corona; Jane Sawada, daughter of Mr. and Mrs. Toshio Sawada of Stanton; and Arline Nakamishi, daughter of Mr. and Mrs. Yasuhei Nakamishi of San Gabriel.



Christine Nagasaka

Christine Nagasaka, a senior at Redlands (Calif.) High School, won

the annual Teen Citizen contest sponsored by the Junior Women of the Contemporary Club. Nagasaka received a certificate and \$25 savings bond and will now be eligible to compete at the district level. An active school leader, Nagasaka holds two full-time positions at Redlands as the yearbook editor and ASB Commissioner of Pep and Assemblies. She maintains a high B average and plans to major in social ecology at UC Irvine. After college, she hopes to attend law school. Nagasaka is the daughter of Mrs. Joanne Nagasaka, who hails from Idaho.

The So. Calif. Japan America Society's Victor Carter award was presented to Katsumi Mukaeda for his 66 years of continuous membership in the organization. Stephanie Ann Lee, 21, a coed at San Francisco City College, was crowned Miss Chinatown USA during festivities ushering in the Year of the Horse. Lee, 5-4, 112 pounds, was chosen from a field of 14 contestants. Her court includes: Sally Chan, 20, Miss Chinatown San Francisco; Donna Kay Leung, 23, Hackensack, N.J., first princess and Miss Chinese Chamber of Commerce; Mary Cho, 19, San Francisco, second princess; Loretta May Chang, 21, San Francisco, third princess; Lal Lee, 19, Detroit, fourth princess; and Helen Yee, 26, of Phoenix, Miss Talent.

#### Media

Elynn Iwaoka was promoted to coordinator of the community relations and editorial departments of Newsradio 78-WBBM Chicago.

Sharon Noguchi, reporter for the Palo Alto Times, recently covered the Mountain View School District trustees meeting where the school superintendent was fired effective June 30.

TV personality Mario Machado was honored by the L.A. City Employees Asian American Assn. for his outstanding service to the community at a Chinese New Year's dinner. Machado has been a professional broadcaster since 1967. He is best known from his work as co-host of KNXT-TV's Noontime show.

#### Military

Military Intelligence Service Club of Southern California installed Sho Nomura, a CBI theater veteran, of Sierra Madre as president, succeeding Koichi Shibuya. MIS Club, c/o 707 E. Temple St., Los Angeles 90012, is accepting contributions from friends to assist in writing the "Yankee Samurai", title of a book about the MIS being written by Joseph Harrington. Club members have presented \$600 to date.

#### Sports

"I had only been hoping to win about four matches. I myself was sur-



Wakayashima

prised to capture the championship," 17-year-old Reid Asato (Wakayashi-

ma) said after winning the Jonidan division of the New Year Grand Sumo Tournament in Tokyo. Unbeaten Asato, a Hawaiian, captured the division by pushing Minatoryu out of the ring to gain his seventh consecutive victory.

Two Nikkei wrestlers, Sansei Rod Uyekawa (157 lbs) and Yonsei Steve Yonemura (106 lbs), won Pacific League wrestling championships recently at San Gabriel High. For Uyekawa, also an outstanding judoka, it was the third consecutive league championship. He has won two national AAU junior age-weight championships and a state high school championship in judo. Uyekawa is the son of George and Terry Uyekawa of Monterey Park. Yonemura, a junior, is the son of Larry Yonemura, also of Monterey Park. Both attend Alhambra High.

## Ex-marine's secret cover exposed by routine police blotter report

ALBUQUERQUE, N.M. — Guy Gabaldon was back in the news because of a routine crime report in the local police blotter here. During World War II, he had won the Navy Cross for capturing 2,000 Japanese soldiers, then sent it back to President Nixon in 1970 because a U.S. border guard in Tijuana insulted his Japanese-Mexican wife.

Till a stack of hundred dollar bills (\$5,000) was stolen from his east central motel, Lo La Mi Lodge, and recorded Dec. 1 by local police, Gabaldon was Albuquerque's unknown war hero. George Johnson of the Albuquerque Journal unearthed the crime report and the Gabaldon story.

Gabaldon, 51, was born in San Rafael, N.M., but grew up in Los Angeles with a Japanese American foster

family in Boyle Heights where he learned the language that outwitted the enemy during his one-man guerrilla raids in the 1944 battle of the Marianas.

In 1957, he appeared on Ralph Edward's "This Is Your Life" television show. That attracted production of a movie about his heroic exploits in "From Here to Eternity", which still runs on the late, late show.

In 1964, he moved to Mexico where he married a Japanese girl living near Culiacan and started a scallop-abalone business in Baja California and exported fish to the Orient. But the Mexican government squeezed him out about two years ago. He returned with his family to Los Angeles. Seven months ago he came to Albuquerque.

"I love my good old United States," Gabaldon said as he

remembered his past. "But there is discrimination. My commander nominated me for the Congressional Medal of Honor—I've single-handedly captured more prisoners than anyone in the military history of the United States—but it came back a Silver Star. It wasn't until the movie that it was raised to a Navy Cross. I had the highest IQ in my regiment—134—and I was never promoted beyond private first class.

"I may sound bitter. But I captured 2,000 diehard, fanatical Japanese. I want to spend the rest of my life fighting discrimination."

### West Los Angeles 1978 Travel Program

Flights are open to JACL Members and all qualified family members. Membership must be at least 6 months immediately prior to departure.

### FLIGHTS TO JAPAN

#### FLIGHT 1: JUNE 13-JUNE 30

Dir.: Steve Yagi, 3950 Berryman Ave., L.A. 90006 .....397-7921

#### FLIGHT 2: AUG. 5-AUG. 25

#### FLIGHT 3: SEP. 30-Oct. 21

Dir.: Mrs. Toy Kanegai, 1857 Brockton Ave., L.A. 90025 820-1133

#### L.A. — Tokyo \$554\* Round Trip

Includes \$3 Departure Tax and \$10 Administrative Fee  
Optional Stopover in Honolulu, additional \$3

- 12-day Land Tours available. Optional tours to Kyushu Extension; On Flt. 3 only Hokkaido Extension. • For reservations, mail \$100 as partial payment with coupon below. Make payable to "West LA JACL Flight". Coupon may be sent to Flight Director as listed.

West L.A. JACL Flight, c/o R. Takeda  
1702 Wellesley Ave., Los Angeles, Calif. 90025

Please reserve \_\_\_\_\_ seat(s) for your flight No. \_\_\_\_\_

I am a JACL member or will have been at least six months prior to date of flight departure. I agree to the conditions of the contract and brochures. JACL and its agents act only in the capacity of agents for passengers in all matters relating to travel and as such assume no liability for any injury, damage, loss, accident, delays or change beyond their control. Liability of transportation and tour operation is limited to the terms of the tickets and membership agreements. Flight schedules are subject to change.

Name \_\_\_\_\_

Address \_\_\_\_\_

City, State, ZIP: \_\_\_\_\_

Phone: \_\_\_\_\_

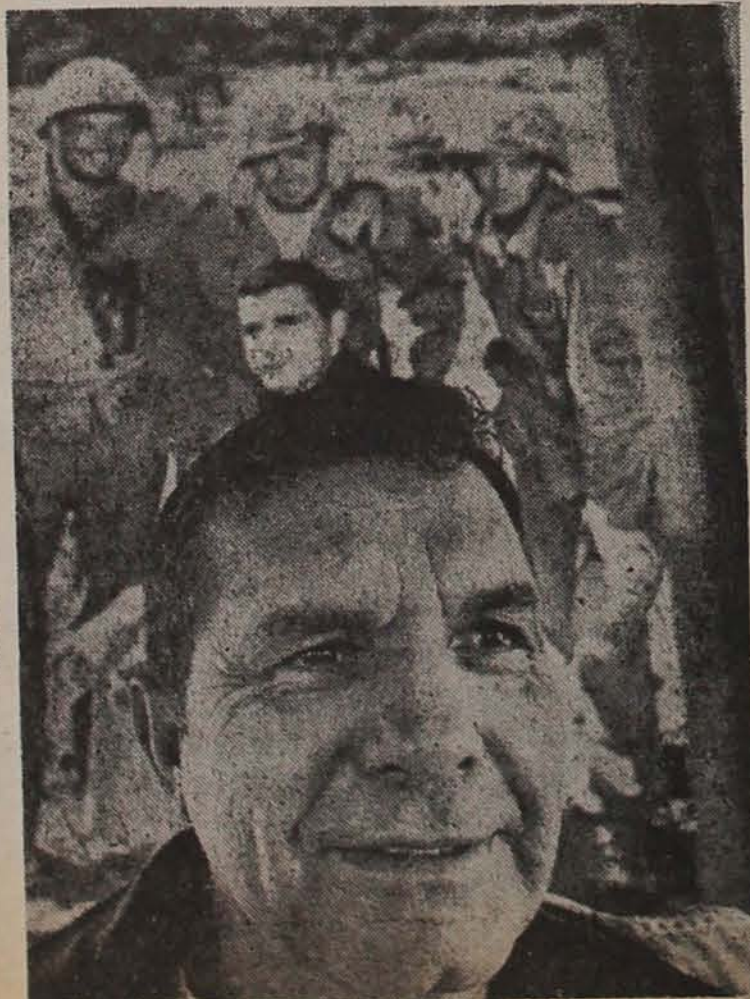
Passport No. \_\_\_\_\_

☐ Send Tour Brochures

Flight Only ☐

FOR ADDITIONAL INFORMATION PLEASE WRITE OR CALL:  
George Kanegai, 1857 Brockton Ave., L.A. 90025 (213) 820-3592 (eve)

• Next flight and tour meeting will be held at Felicia Mahood Recreation Center, 11338 Santa Monica Blvd., West L.A., on Sunday, March 19, 2 p.m. Brochures, general information available. Open to all JACL members.



Albuquerque Journal photo by Jim Nachwey

Guy Gabaldon poses in front of movie poster.

### WATERCOLOR WORKSHOP

To Scenic, Picturesque and Historical

## Northern Japan

15 days: Depart May 27 via Pan Am from Los Angeles

Led and instructed by ROBERT HIRAM MELTZER, A.W.S., national award winning artist and Nat'l President of American Watercolor Society. Open to Artists, Non-Artists and Photographers.

#### —FEATURES—

- NIKKO with Toshogu Shrine, Lake Chuzenji, Kegon Waterfall, Ryuzu Cascades, and zigzag mountain road known as Iroha Zaka
- Scenic BANDAI Plateau with historical Aizu-Wakamatsu
- SENDAI with picturesque Matsushima and nearby fishing villages.

INCLUDES: Round trip airfare, all accommodations western style hotels or Japanese inns; all breakfasts and dinners; sightseeing by chartered motorcoach with admission fees; gratuities to local servants, drivers, porters, etc. for services performed during the tour; bilingual speaking guide throughout.

Total Cost: \$1909 Limited to 20 persons.  
\$200 deposit required.

For further information and reservations, call or write to:

### Asia Travel Bureau

102 SO. SAN PEDRO STREET • LOS ANGELES, CA 90012

PHONE (213) 628-3232

Yuzy Sato, Asia Travel Bureau

Robert H. Meltzer, A.W.S.

P.O. Box 2132, Beaumont, Ca 92223 (714) 845-4724

## KOKUSAI TRAVEL



### 1978 JAPAN TOURS for JACLers

#### SANSEI SUMMER TOUR

Departs 6/26 - \$495

14 DAYS—Tokyo, Nikko, Sendai, Matsushima, Tokyo, Hakone, Kyoto, Shodo Island, Nagoya, Tokyo

#### JUNE HIGHLIGHTS OF JAPAN

Departs 6/26 - \$450

10 DAYS — Tokyo, Nikko, Sendai, Matsushima, Tokyo, Hakone, Kyoto

#### AUGUST HIGHLIGHTS OF JAPAN

Departs 8/12 - \$595

12 DAYS — Tokyo, Nikko, Sendai, Matsushima, Tokyo, Nagoya, Kurashiki, Shodo Island, Kyoto

#### ODYSSEY: OTHER SIDE OF JAPAN

Departs 10/1-2-\$595

11 DAYS — Tokyo, Nagoya, Takayama, Kanazawa, Fukui, Amanohashidate, Tottori, Shodo Island, Kyoto

#### DISCOVER WINDWARD JAPAN

Departs 10/1-2 - \$595

11 DAYS — Tokyo, Nikko, Zao, Yamagata, Akita, Lake Towada, Morioka, Sendai, Matsushima, Tokyo

#### KYUSHU EXTENSION TOUR

Departs Kyoto 10/13-\$325

6 DAYS — Connects to Odyssey & Discovery Tours. Cruise to Kyushu, Miyazaki, Ibusuki, Hayashida, Kumamoto

#### ORIENT EXTENSION TOUR

Departs Tokyo 10/13-\$550

6 DAYS — Connects to Odyssey & Discovery Tours. Six days in Taipei and Hong Kong. Airfare Included.

MEAL PROGRAMS: Many meals included in Japan Tours

TRANS-PACIFIC AIRFARES NOT INCLUDED



### KOKUSAI TRAVEL

321 E. 2nd St., Los Angeles, Calif. 90012

Phone: 626-5284





EL PIMENTERO: Frank Fukazawa

## Japanese Views on Trade

and recession? Isn't there any voluntary cooperation between labor and management like in Japan?

3—Since when has free capitalism changed to government based negotiations?

American and British governments are putting pressure on our government to purchase more of their products. Can't their business men come to Japan themselves to at least make the effort to sell? In the first place, have they ever thought of learning to speak Japanese? Our salesmen speak broken English, Spanish, Chinese and even Arabic. Yet, they conclude contracts.

4—Presuming we did reduce the \$18 billion surplus and go into deficit as they wish, do they think this single act by Japan could diminish global recession? Why does President Carter try to make it appear that recovery of Japan and German economics will become the stimuli for revival of international trade, while he continues to stockpile imported oil and run his country into deeper deficit of \$31.4 billion for 1977?

5—The Japanese Yen is not economically strong. It looks strong only because the U.S. Dollar has weakened. Thanks to this, the strong yen has put the brakes on export and now one out of five export-dominated factory will wind up in the red simply because the dollar they get earns fewer yens.

6—Do they know that an average of 1,500 bankruptcies has been continuing for the past 16 months? Do they still think the Japanese are individually rich and can import more goods?

Gross National Product and the real income per capita increase should not be confused. Japan as a nation has accumulated a lot of GNP, but the per capita living standard hasn't improved much. Roughly 23%

of individual Japanese income goes into bank savings. This indicates a tremendous purchasing power from the view of American economists, but they should not assess from their standard because we were born poor and know what real poverty is. We are only preparing for the worst like ants stockpile their food for winter. The strings of our purse will not be loosened for quite awhile.

7—Japan desires high-level political talks with the high commissioner of the European Economic Committee. It wound up with trivial talks on control procedures of chemicals and

pharmaceuticals.

Since when has a high commissioner operate as a low class technocrat? Or was he another politician ignorant of Japan affairs?

8—We fully understand their concepts, whereas they completely lack knowledge of ours. The basic concept of Americans and Europeans lies in individualism. Conversely, the Japanese concept lies in the fact that values, rights and duties originate in the community to which they belong or in the company they work for.

Unless they understand this difference, political talks or business sales with Japan will never succeed. They will still keep thinking Japan is "Gipango".

## HAYAKAWA

Continued from Page 8

Gov. Ralph Carr, Colorado; Sen. Robert Taft, Ohio; Sen. Barry Goldwater, Arizona; John Rhodes, Arizona; Gov. John Connally, Texas.

Representatives from Boise Valley JACL also attended the Lincoln Day Banquet. The Nikkei population here is light and communication even lighter as only 12 managed to find a table with members of the press next to the head table. The group included JACL President Sam Fujishin and past presidents Mas Yamashita and Jim Oyama.

In that packed banquet hall the Nisei hardly expected to get close enough for a handshake, but they managed, and were invited by the Senator to his suite.

The JACLers were too surprised to even thank him properly, for of all the dignitaries and important people he could have been with, he spent an hour chatting and answering questions about topics such as reparation, alternate energy sources, his election, the current farm strike, the books he has written and the one he is now finishing.

### Contemporary artists

LOS ANGELES—Works of 23 Asian American artists will be on exhibit in groupings a week at a time from Mar. 12-April 9 at the M.M. Shinno Gallery, 5820 Wilshire Blvd.

### Girls' Day

LOS ANGELES—In commemoration of Girls' Day, Yuso Sugiura, instructor-in-residence at the San Francisco Ikebana Society, will give a special presentation at the California State Museum of Science and Industry, March 3, 7:30 p.m., in Kinsey Auditorium.

### Westside Optimists

LOS ANGELES—Proceeds of the annual Westside Optimist Club fundraiser Mar. 4, 7:30 p.m., at Veterans Memorial Hall, Culver City, will be used for community service, youth work and Keiro nursing home project, it was announced by project chairman Frank Hayashi.

### Tour orientation

JACLers scheduled for Japan Flights this spring will have orientation meetings as follows:

#1—Tuesday, Mar. 7, 7:30 p.m., Wesley Methodist Church, San Jose. #4—Mar. 7, 7 p.m., Calif. First Bank, 120 S. San Pedro St., Los Angeles (Use rear entrance). #6—Tuesday April 4, 7 p.m., Calif. First Bank, 120 S. San Pedro St., Los Angeles (Use rear entrance). And #7—Thursday, Apr. 20, 7 p.m., Mas Satow Bldg., San Francisco.

## Japan Travel Bureau

INTERNATIONAL

### Tokyo Arrival and Departure Packages

ARRIVAL: \$50 per person Sgl rm supp: \$19  
Arrive at NEW International Airport (NARITA). After the entry process, passenger will be greeted and transferred to a hotel in Tokyo.

EXTENSION: \$26 per night 3 night maximum  
FOR EITHER ARRIVAL OR DEPARTURE

DEPARTURE: \$50 per person Sgl rm supp: \$19  
Hotel accommodations for one night, transfer by motorcoach from hotel to NEW International Airport (NARITA).

For further information or reservation, please consult your local JACL Authorized Retail Travel Agent or Japan Travel Bureau International.

## JACL Tour to Europe

HOLLAND, GERMANY, AUSTRIA, ITALY  
FRANCE, ENGLAND

26-Day Excursion to Europe: \$2,300  
Includes airfare, airport tax, 1st class hotel accommodations, and many other features

Departs Sunday, May 28, 1978

FROM LOS ANGELES VIA LUFTHANSA AIRLINES 707

Returns Thursday, June 22, 1978

Tour package includes transfers between airports and hotels • 35-40 meals (mostly breakfasts) • English-speaking escorts to answer questions and provide other services • Farewell dinner party on the last night.

FOR RESERVATIONS, CALL OR WRITE:  
Tom Okubo, JACL EUROPEAN TOUR,  
P.O. Box 22386, Sacramento CA 95822, (916) 422-8749

## The 1978 JACL TRAVEL PROGRAM

Sponsored by the National Japanese American Citizens League

Open to All Bonafide JACL Members

### Group Flights to Japan

Via JAL 747/GA100 — Round Trip Fare: \$564\*

Group No.	Departs from	Dates	Full
1—Los Angeles/San Francisco		Apr 5-26	
4—Los Angeles		Apr 19-May 10	
5—Vancouver, B.C.		Apr 1-24	
7—San Francisco		May 22-June 5	
8—Los Angeles		June 26-July 10	
10—San Francisco		July 24-Aug 21	
11—Los Angeles/San Francisco		July 25-Aug 22	
12—San Francisco		July 31-Aug 31	
14—Los Angeles/San Francisco		Sep 4-25	
15—San Francisco		Sep 25-Oct 16	
17—San Francisco		Oct 3-26	Full
18—Los Angeles/San Francisco		Oct 2-26	
21—San Francisco		Oct 16-Nov 6	
23—San Francisco		Nov 27-Dec 18	
24—San Francisco		Dec 20-Jan 9	

Via /GA100 — Round Trip Fare: \$720\*

9—Chicago Jun 25-July 16

Via PanAm 747/GA100 — Round Trip Fare: \$564\*

6—Los Angeles	May 6-27
13—Los Angeles	Aug 12-Sep 2
20—Los Angeles	Oct 1-21
22—L.A./Honolulu stopover	Oct 16-Nov 6

Via JAL Charter — Round Trip Fare: \$599\*\*

16—Chicago Oct 2-22

Via NW 747/GA100 — Round Trip Fare: \$564\*

25—Honolulu Gateway Jun 20-July 5

### Caribbean Cruise (from Miami)

Aboard Norwegian Caribbean Lines/MS Skyward:

B Deck Inside \$589.25; C Deck Outside \$560.75 (Airfare to Dep May 12 evng, ret May 20 aft Miami extra)

### Group Tour to Europe

Via Lufthansa — 26-day Excursion: \$2,300

2—Los Angeles May 28-June 22

#### GENERAL INFORMATION

\* Air fare (eff Aug 1, 1977) includes round trip, \$3 airport departure tax, and \$20 JACL administrative fee. Adult and child seats same price on any flight; infants 2 years old, 10% of applicable regular fare. / \*\* Charter price includes round trip airfare, tax, JACL administrative fee and may vary depending on number of passengers. All fares, dates, times subject to change. If there are any questions regarding the Nat'l JACL Travel Committee policies or decisions, write or call Travel Coordinator, Nat'l JACL Hq, 1765 Sutter, San Francisco, Ca 94115 (415-921-5225)

Local Administrators Can Assist with Certain Flights Listed Below:  
San Jose: Flt 1, 18—Grant Shimizu, 724 N 1st St, San Jose, Ca 95112 (408) 297-2088  
Sacramento: Flt 2, 17—Tom Okubo, 1121 Lake Glen Way, Sac'to, Ca 95822 (916) 422-8749  
Seattle: Flt 5—Harry Kadoshima, 526 S Jackson, Seattle, Wa 98104  
Chicago: Flt 9, 16—Frank Sakamoto, 5423 N Clark St, Chicago, Il 60640 (312) 561-5105  
San Francisco: Flt 12, 15—Tad Hirota, 1447 Ada St, Berkeley, Ca 94702 (415) 526-8626  
Portland: Flt 25—Jim Iwasaki, 400 SW 4th Ave, Portland, Or 97204 (503) 223-6245

### Information Coupon

Mail to any JACL-authorized travel agent, chapter travel chairperson or

National JACL Travel  
1765 Sutter St., San Francisco, Calif. 94115

Send me information regarding 1978  
Nat'l JACL Flights, especially Group # \_\_\_\_\_

Name \_\_\_\_\_

Address \_\_\_\_\_

City, State, Zip \_\_\_\_\_

Day Phone \_\_\_\_\_ Chapter \_\_\_\_\_

Effective Date \_\_\_\_\_

City, State, Zip \_\_\_\_\_

New Address \_\_\_\_\_

label "box". Write in new address and effective date.

Apr \_\_\_\_\_

PACIFIC CITIZEN  
355 E. 1st St., Rm. 307, Los Angeles, Ca. 90012



AT OUR NEW LOCATION FROM MARCH 1

### Yamato Travel Bureau

321 E. 2nd St., Suite 505  
Los Angeles, Calif. 90012

## JAPAN SUPER-SAVER TOURS

For JACLers

In Conjunction with JACL Flight Departures

MAY 16 — JULY 25 — OCTOBER 16

Ten Days : \$395

- Visits Tokyo, Kamakura, Atami, Nagoya, Pearl Island, Kyoto
- Deluxe Hotels & four lunches included.
- Complete Sightseeing & Tour Escort.
- Minimum 15 persons needed to operate.

Cost does not include Trans-Pacific airfare.

YOUR AUTHORIZED JACL TRAVEL AGENT

Kokusai International Travel Inc.

321 E. 2nd St., Los Angeles 90012

213 / 626-5284